

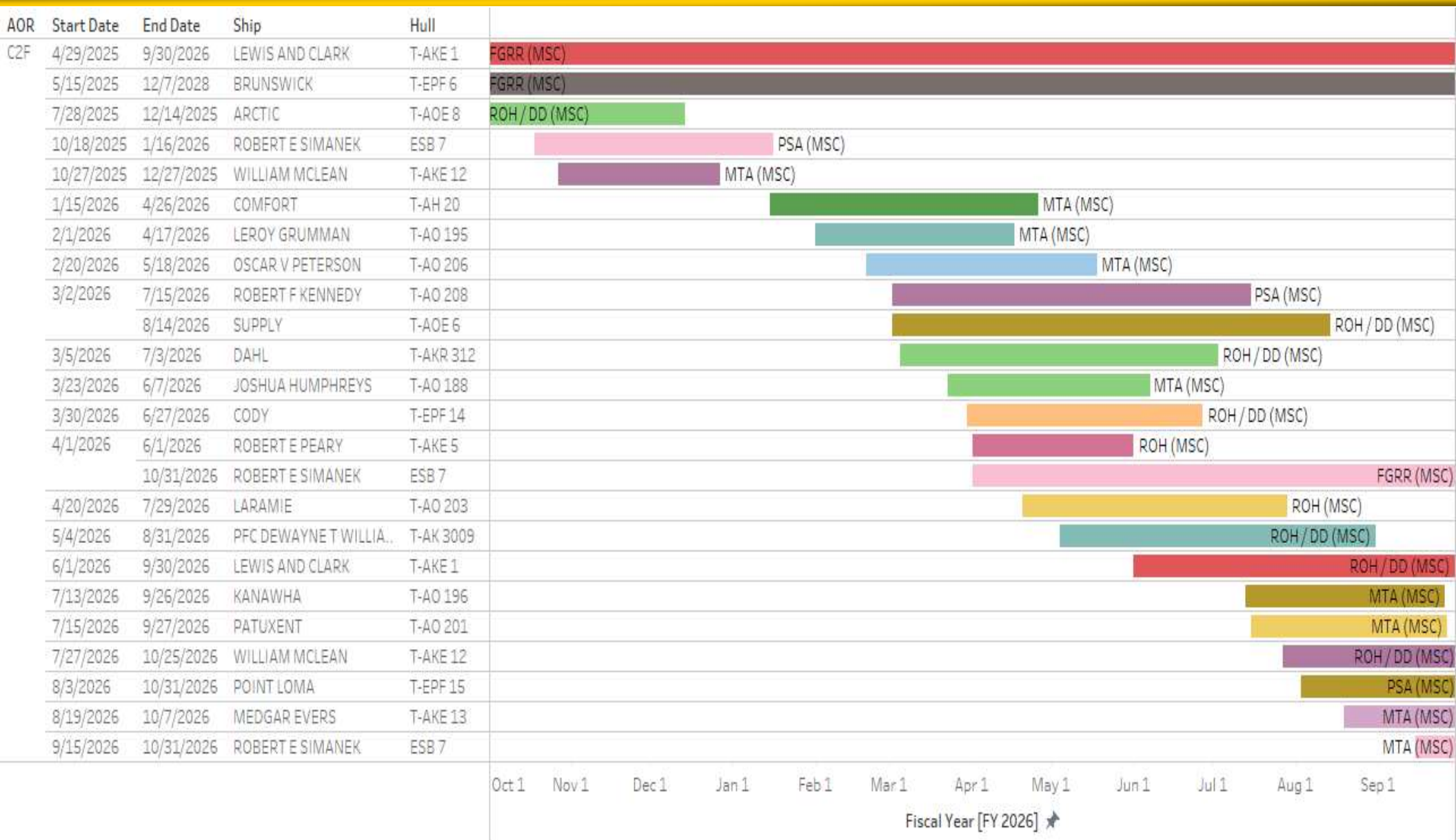


FY26-29 2nd Fleet Shipyard Loading





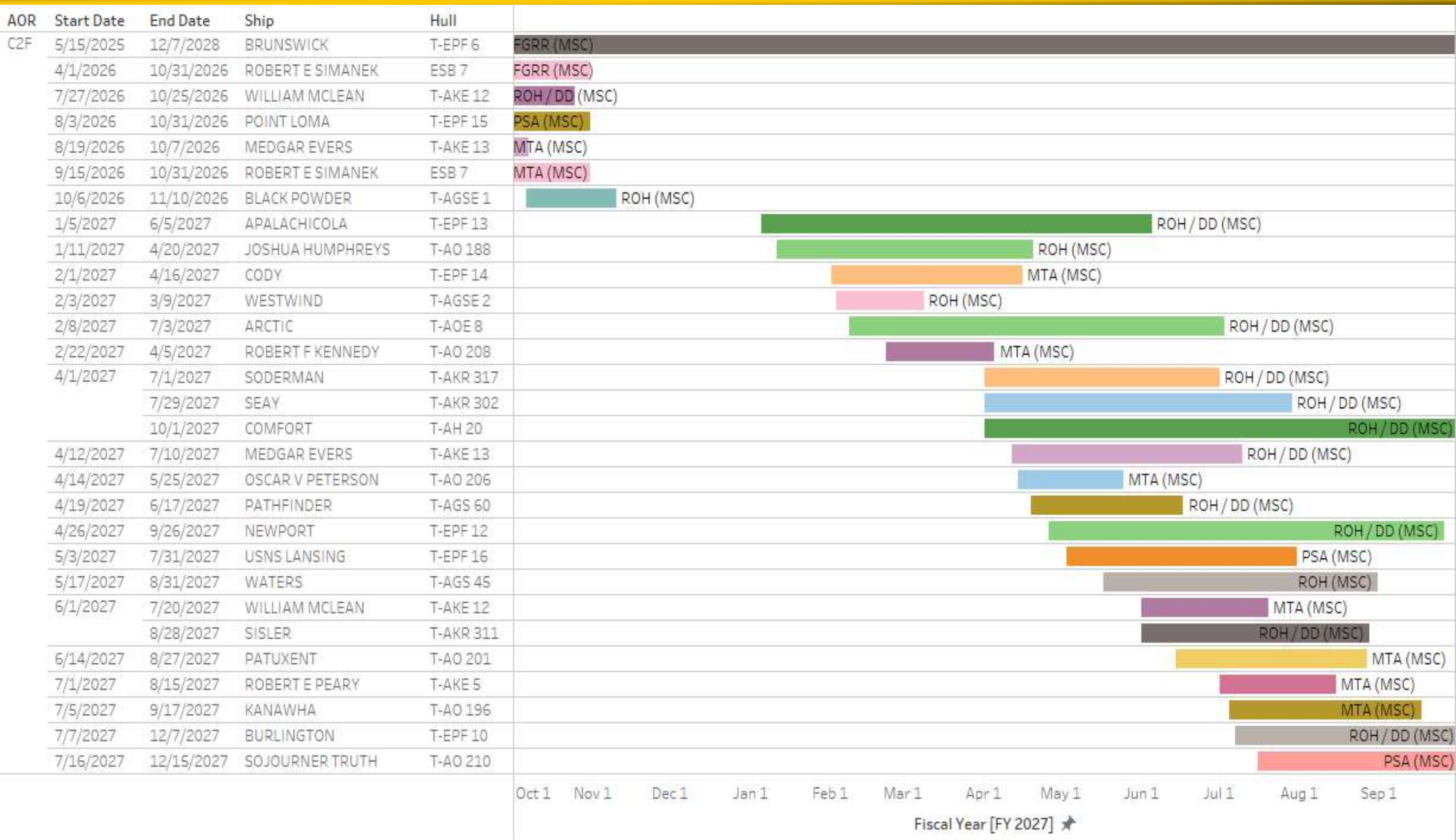
FY26 2nd Fleet Shipyard Loading



UNCLASSIFIED

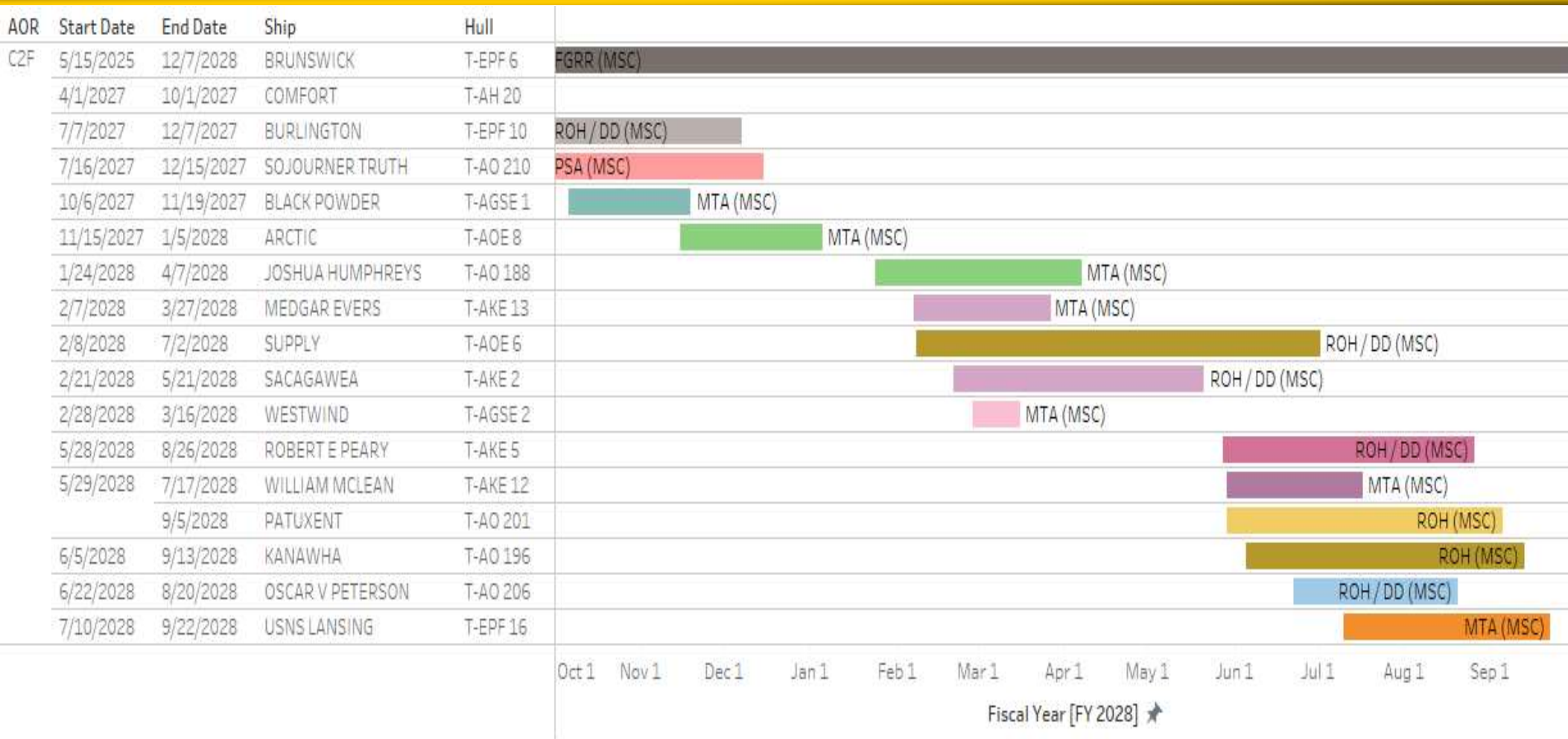


FY27 2nd Fleet Shipyard Loading



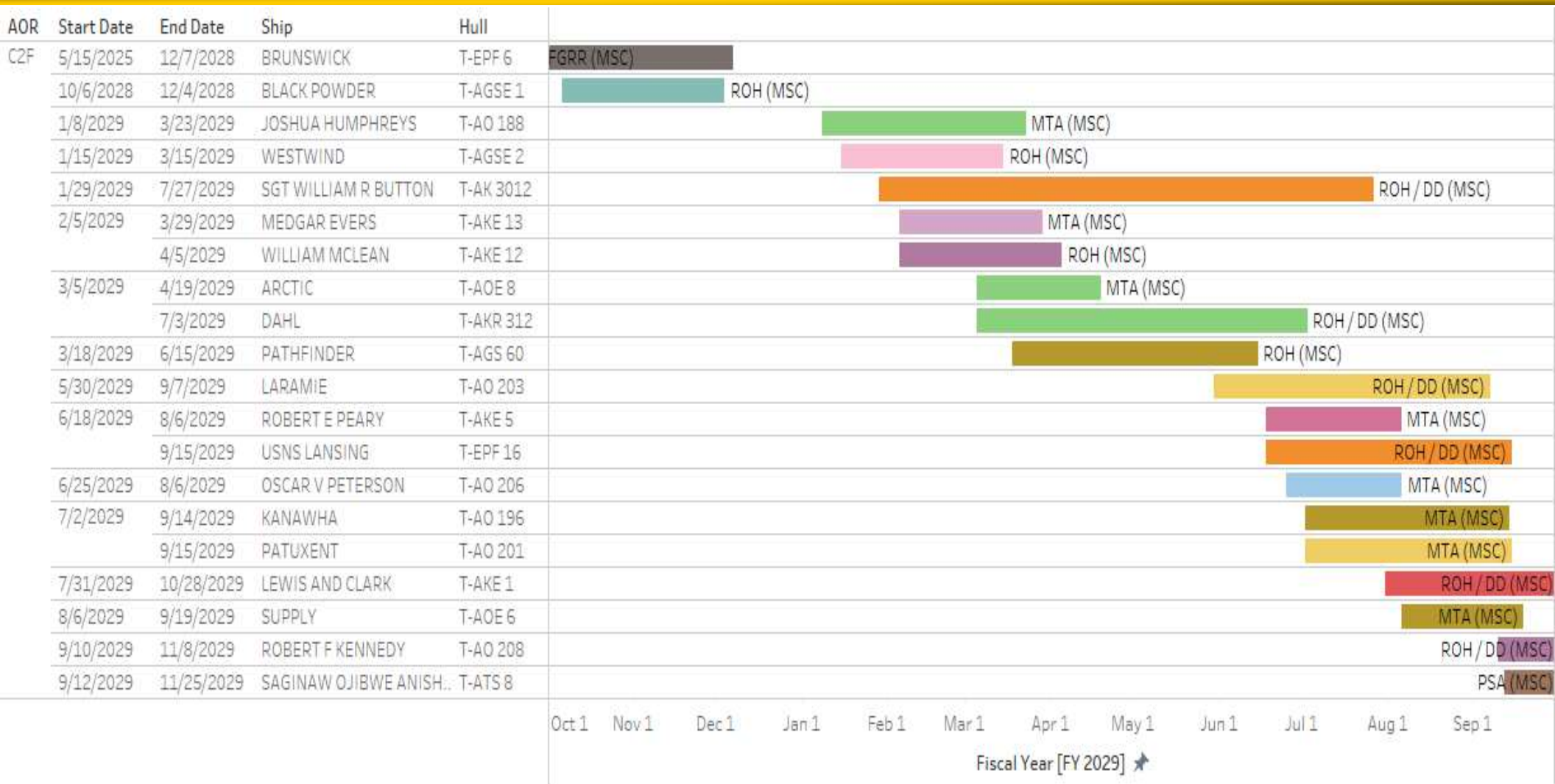


FY28 2nd Fleet Shipyard Loading





FY29 2nd Fleet Shipyard Loading



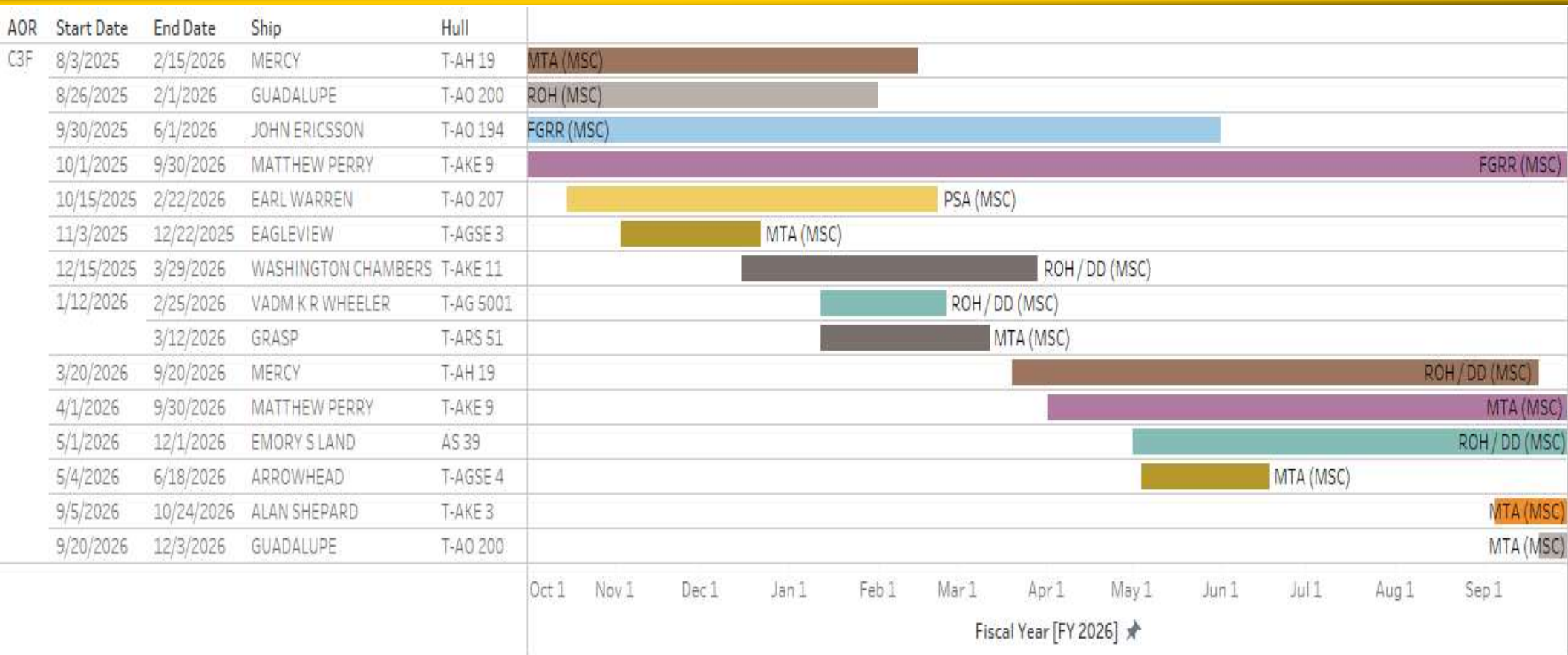


FY26-29 3rd Fleet Shipyard Loading



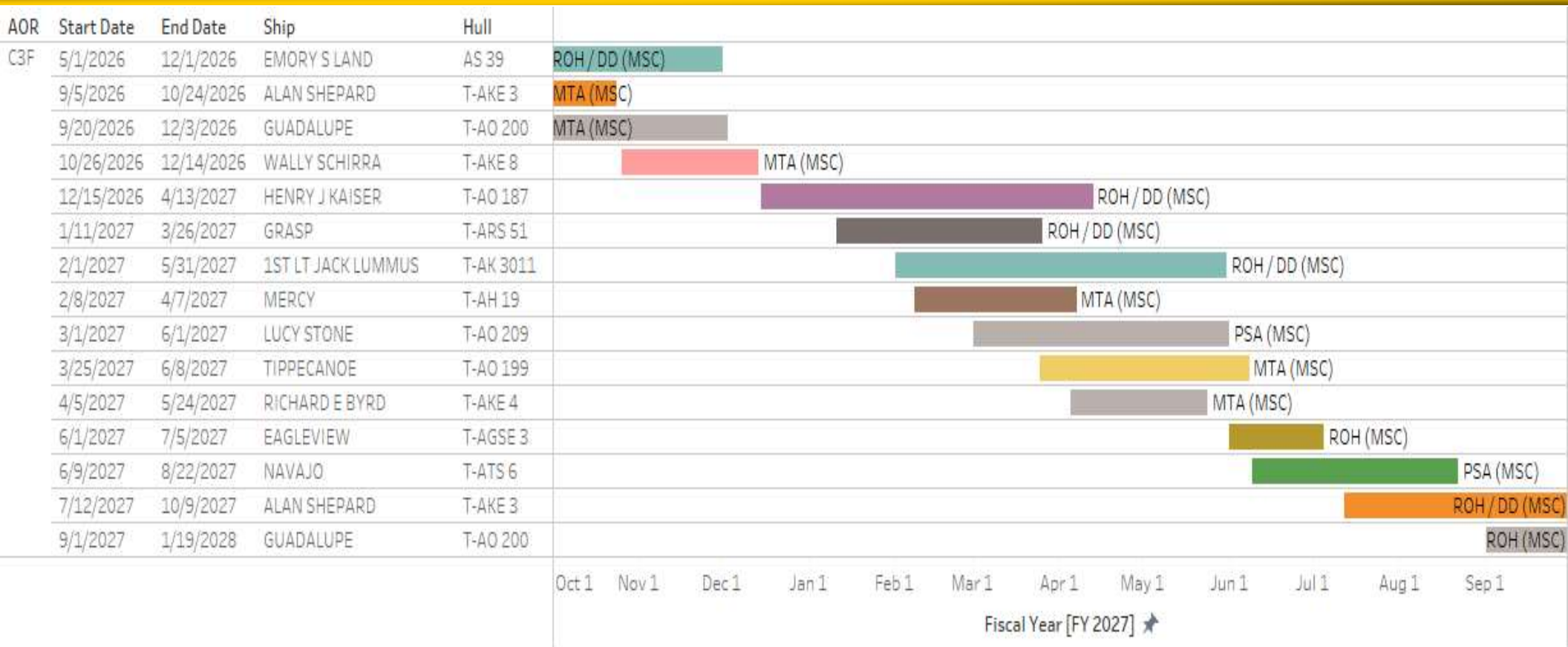


FY26 3rd Fleet Shipyard Loading



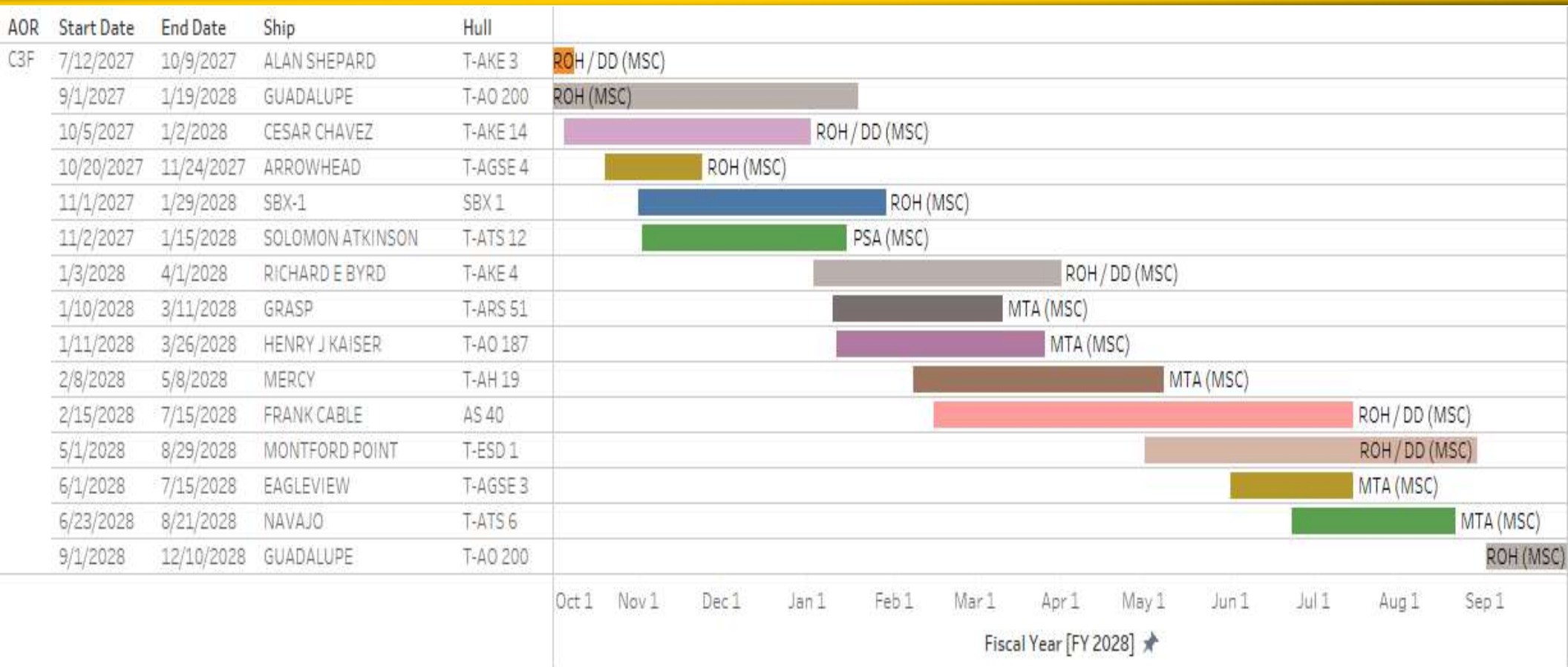


FY27 3rd Fleet Shipyard Loading



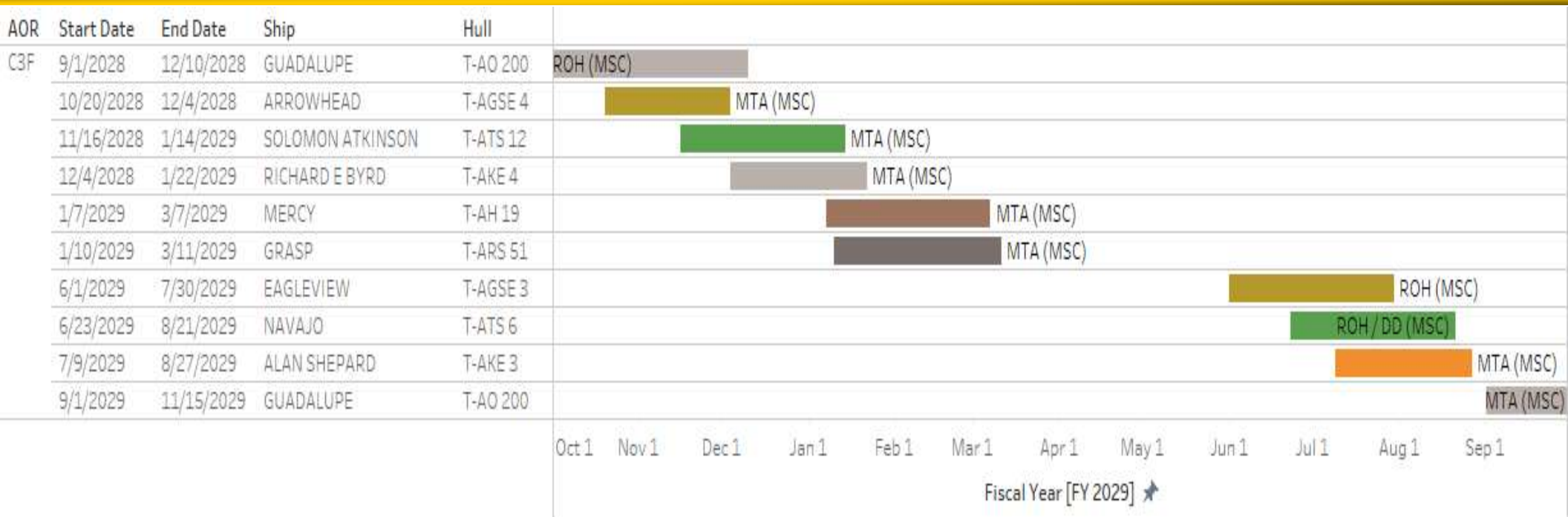


FY28 3rd Fleet Shipyard Loading





FY29 3rd Fleet Shipyard Loading





FY26-29 5th Fleet Shipyard Loading





FY26 5th Fleet Shipyard Loading

Scheduled Availabilities

Planning Factor: 150 MD/D ROH, ROH/DD, MTA, PSA

50 MD/D VR

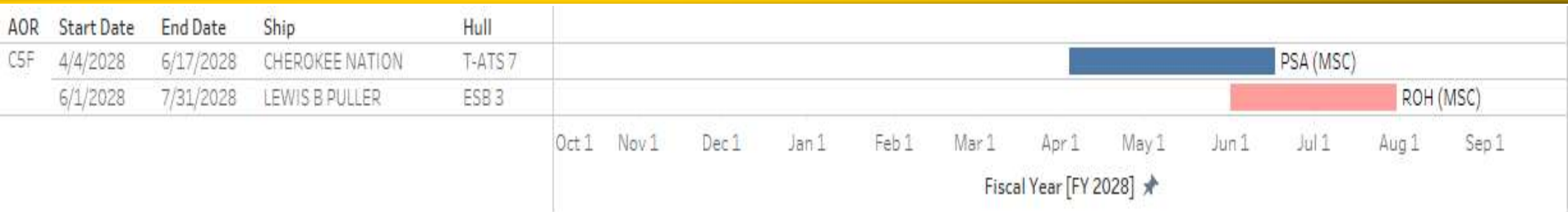


FY27 5th Fleet Shipyard Loading

AOR	Start Date	End Date	Ship	Hull												
C5F	6/1/2027	7/16/2027	LEWIS B PULLER	ESB 3	MTA (MSC)											
					Oct 1	Nov 1	Dec 1	Jan 1	Feb 1	Mar 1	Apr 1	May 1	Jun 1	Jul 1	Aug 1	Sep 1
					Fiscal Year [FY 2027] ★											



FY28 5th Fleet Shipyard Loading





FY29 5th Fleet Shipyard Loading

AOR	Start Date	End Date	Ship	Hull	
C5F	4/19/2029	6/17/2029	CHEROKEE NATION	T-ATS 7	MTA (MSC)
	6/1/2029	7/16/2029	LEWIS B PULLER	ESB 3	MTA (MSC)
					Oct 1 Nov 1 Dec 1 Jan 1 Feb 1 Mar 1 Apr 1 May 1 Jun 1 Jul 1 Aug 1 Sep 1
					Fiscal Year [FY 2029] ↗

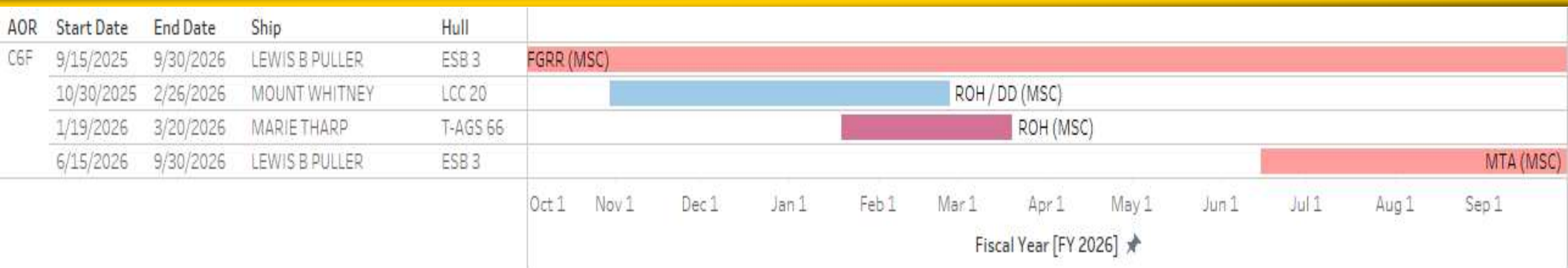


FY26-29 6th Fleet Shipyard Loading





FY26 6th Fleet Shipyard Loading



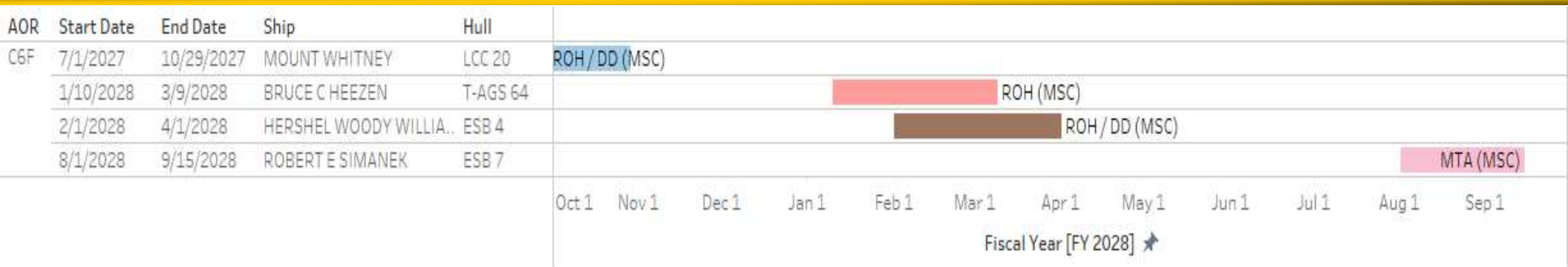


FY27 6th Fleet Shipyard Loading

AOR	Start Date	End Date	Ship	Hull	
C6F	10/1/2026	11/29/2026	MOUNT WHITNEY	LCC 20	MTA (MSC)
	2/1/2027	3/17/2027	HERSHEL WOODY WILLIA..	ESB 4	MTA (MSC)
	7/1/2027	10/29/2027	MOUNT WHITNEY	LCC 20	ROH/DD (MSC)
					Oct 1 Nov 1 Dec 1 Jan 1 Feb 1 Mar 1 Apr 1 May 1 Jun 1 Jul 1 Aug 1 Sep 1
					Fiscal Year [FY 2027] ★

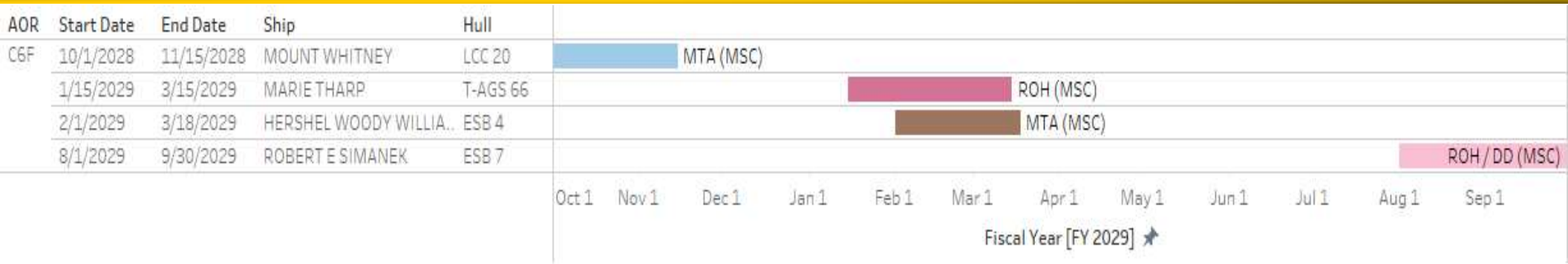


FY28 6th Fleet Shipyard Loading





FY29 6th Fleet Shipyard Loading



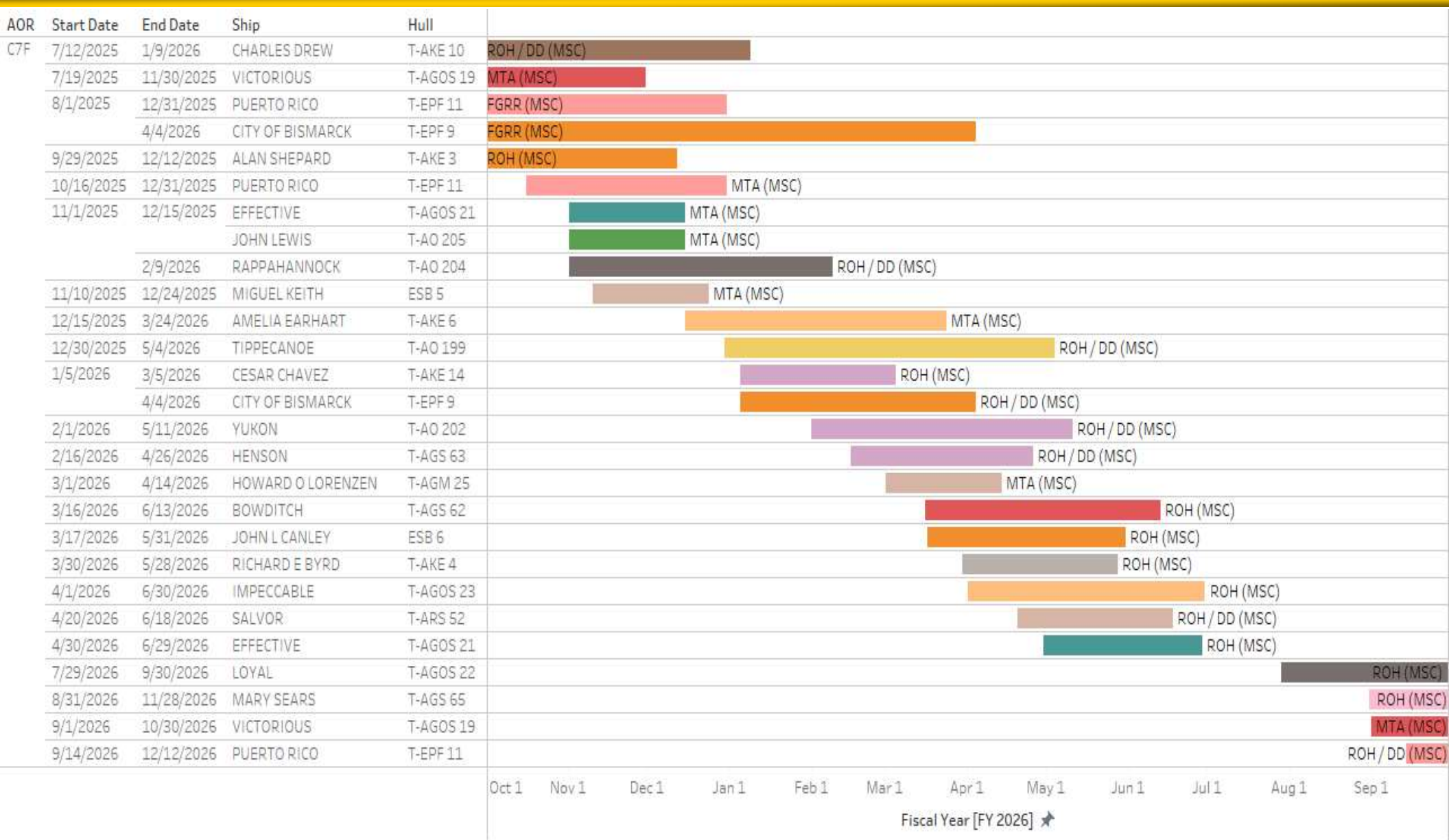


FY26-29 7th Fleet Shipyard Loading





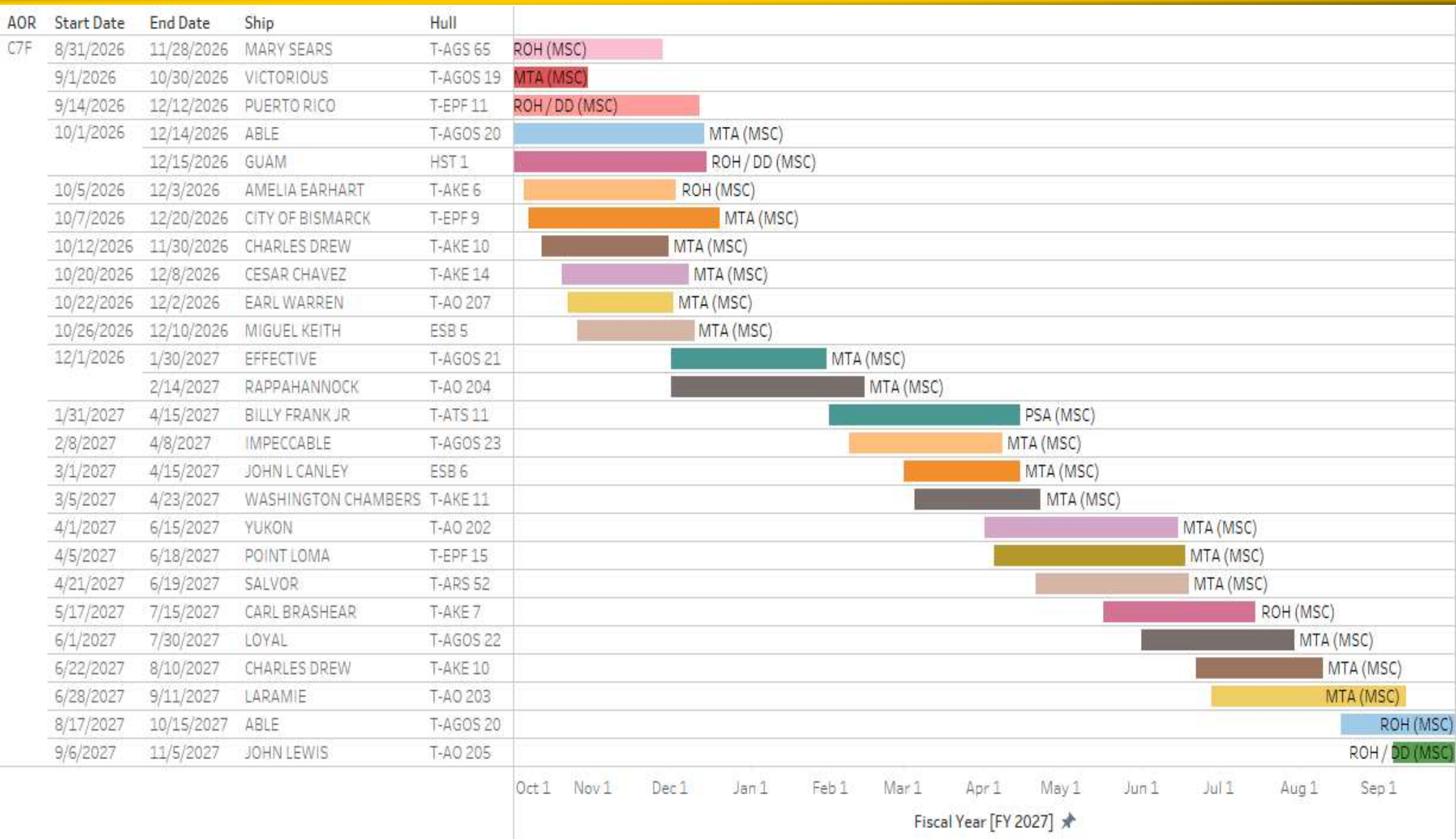
FY26 7th Fleet Shipyard Loading



UNCLASSIFIED



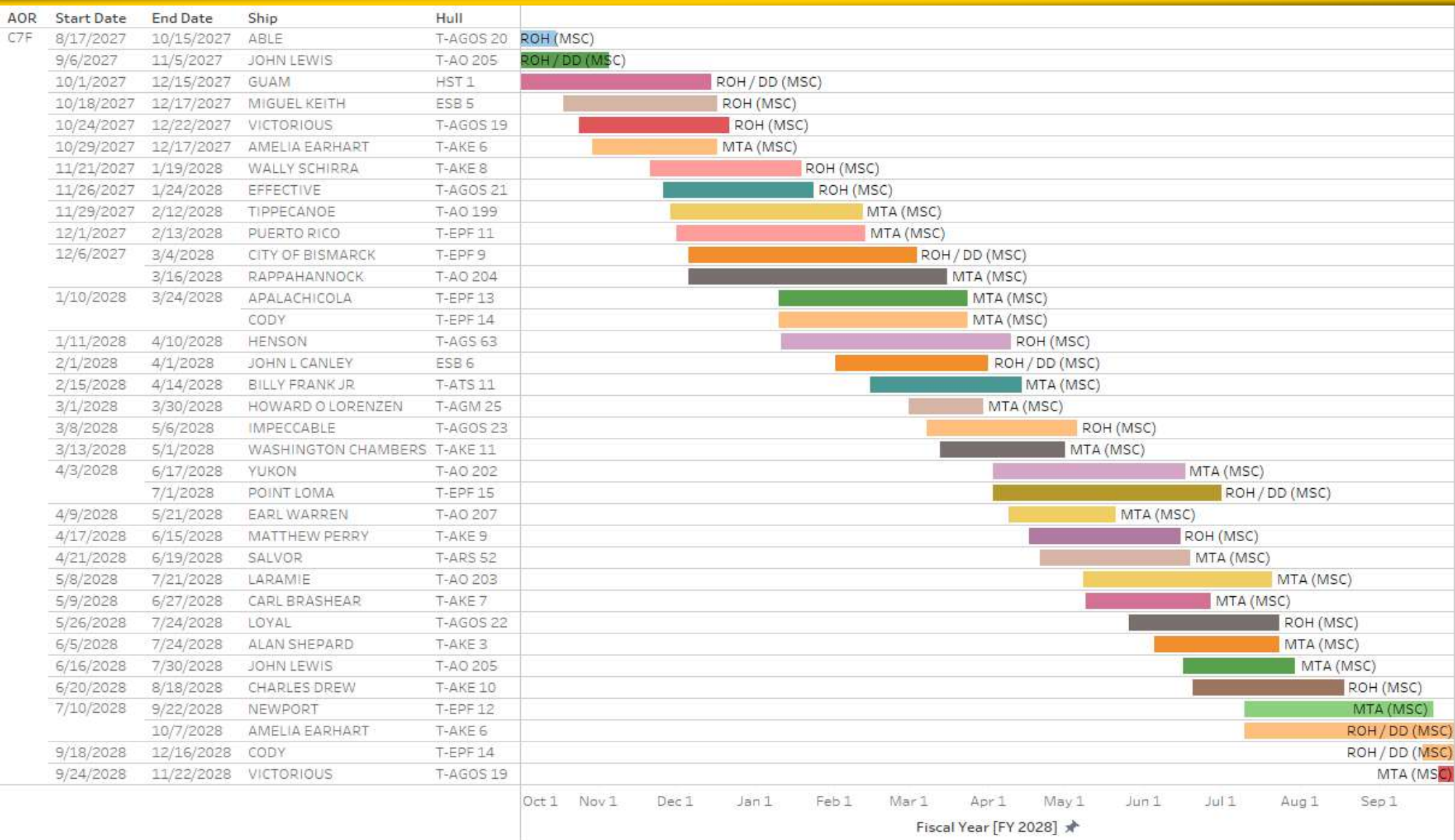
FY27 7th Fleet Shipyard Loading



UNCLASSIFIED



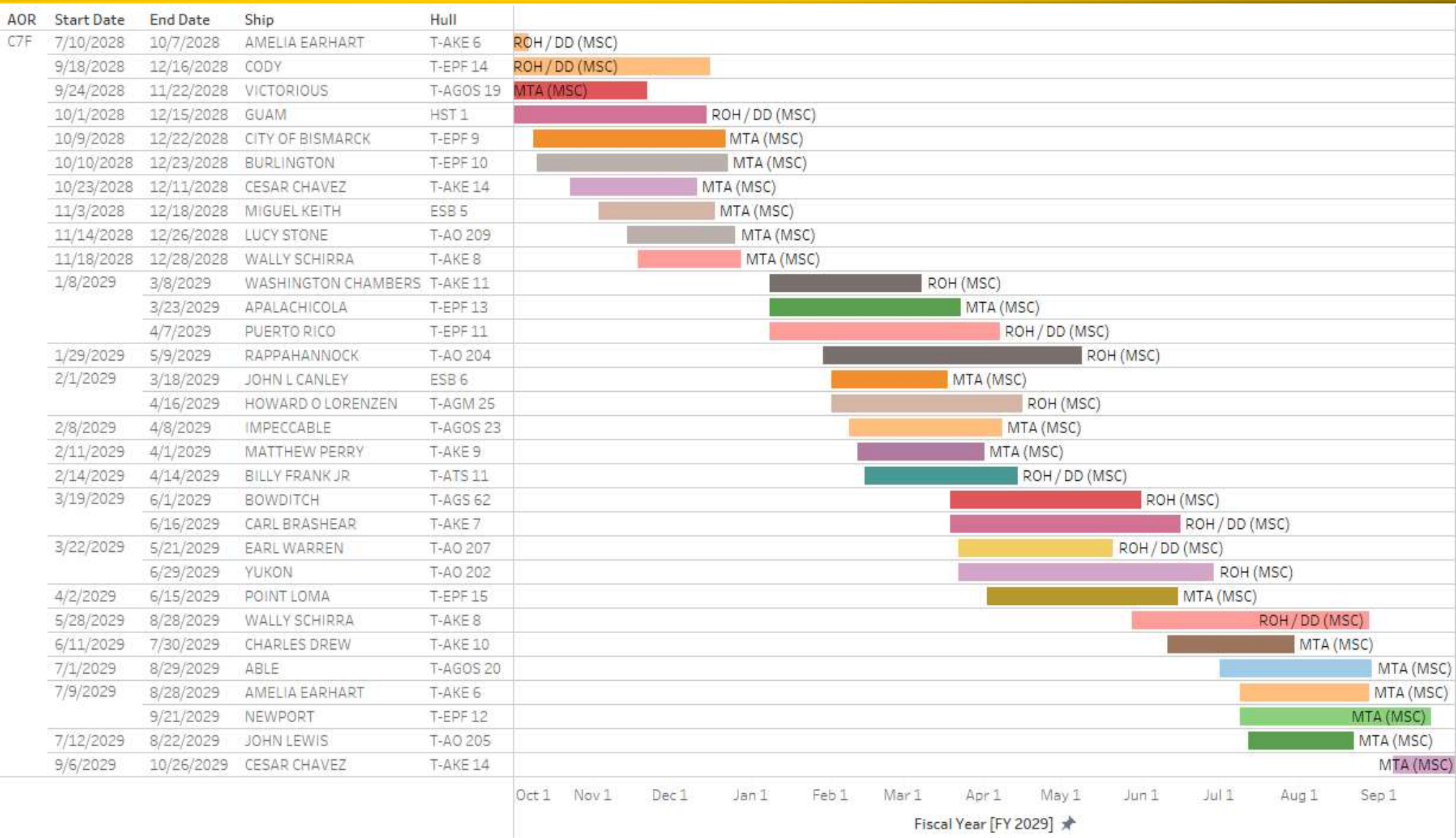
FY28 7th Fleet Shipyard Loading



UNCLASSIFIED



FY29 7th Fleet Shipyard Loading



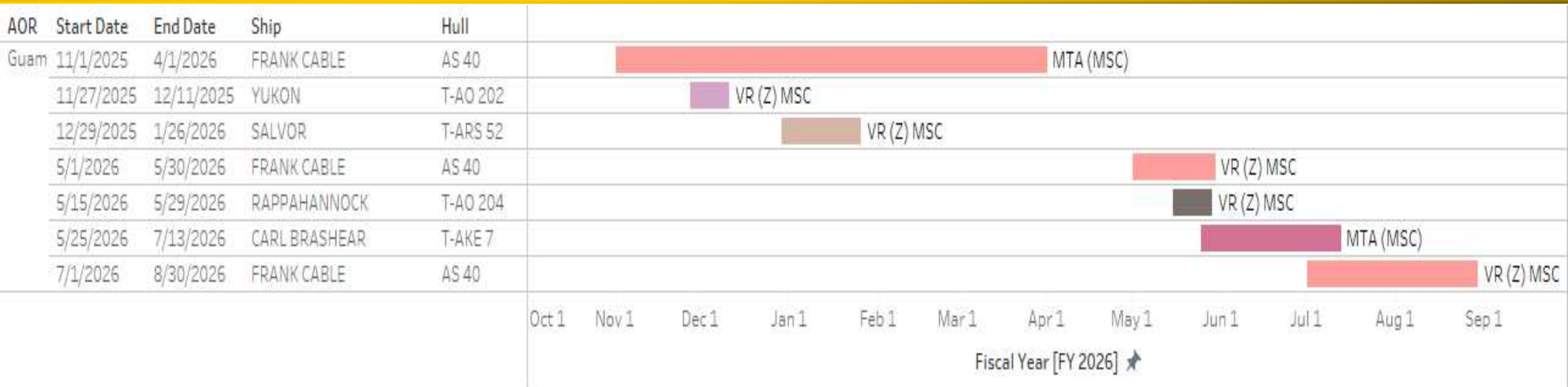


FY26-29 Guam Specific Shipyard Loading



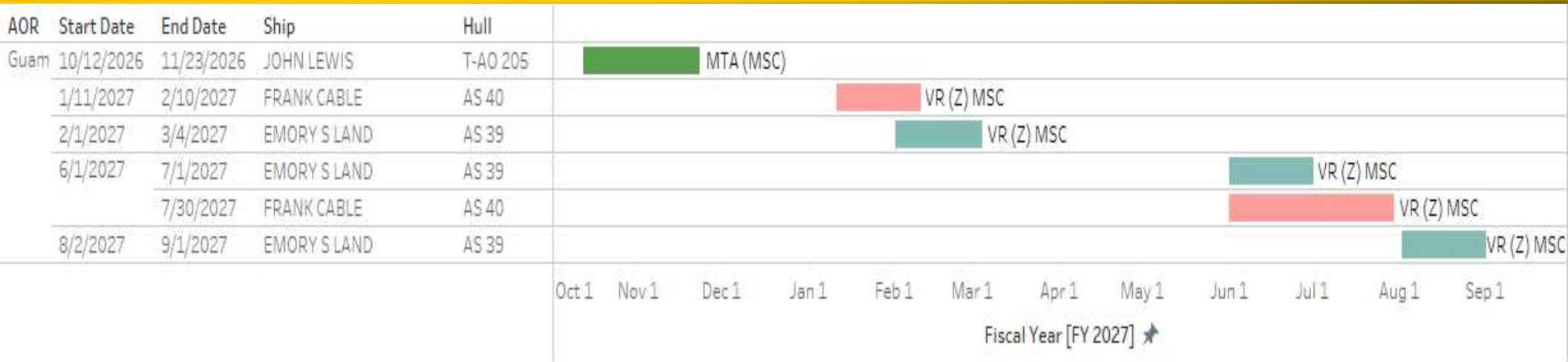


FY26 Guam Specific Shipyard Loading





FY27 Guam Specific Shipyard Loading



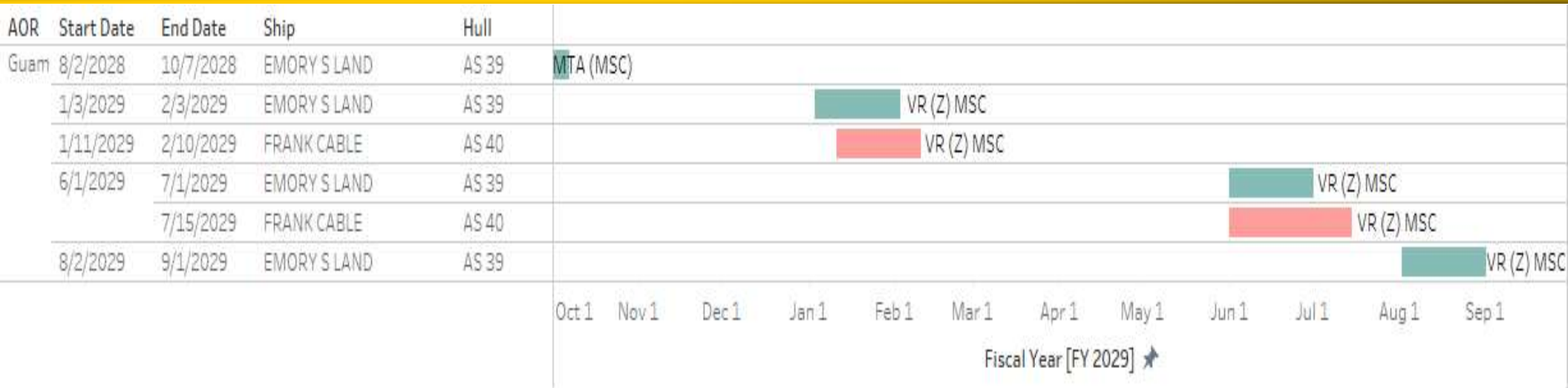


FY28 Guam Specific Shipyard Loading

AOR	Start Date	End Date	Ship	Hull	
Guam	11/1/2027	12/10/2027	FRANK CABLE	AS 40	VR (Z) MSC
	1/3/2028	2/3/2028	EMORY S LAND	AS 39	VR (Z) MSC
	6/1/2028	7/1/2028	EMORY S LAND	AS 39	VR (Z) MSC
	8/2/2028	10/7/2028	EMORY S LAND	AS 39	MTA (MSC)
					Oct 1 Nov 1 Dec 1 Jan 1 Feb 1 Mar 1 Apr 1 May 1 Jun 1 Jul 1 Aug 1 Sep 1
					Fiscal Year [FY 2028] ↗



FY29 Guam Specific Shipyard Loading





Questions?

