



# The U.S. Navy's MILITARY SEALIFT COMMAND



- Executive Summary** ..... 2
- Command and Control** ..... 4
- Organization Structure** ..... 5
- Area Commands** ..... 6
- Our Mission** ..... 7
- Global Maritime Campaign Plan** ..... 8
- MSC Workforce** ..... 9
- U.S. Maritime Administration and the Ready Reserve Force** ..... 13
- VISA, MSP and TSP** ..... 14
- Fleet Operations** ..... 15
- MSC Ships** ..... 16
  - Combat Logistics Force ..... 17
  - Special Mission ..... 22
  - Prepositioning and Seabasing ..... 32
  - Fleet Support ..... 40
  - Dry Cargo and Tankers ..... 52
- MSC Points of Contact** ..... 58

# 2026 HANDBOOK



**The United States Navy's  
Military Sealift Command Headquarters  
Norfolk, Virginia**

As the Department of War's maritime logistics provider, Military Sealift Command (MSC) delivers agile, persistent, and innovative sealift logistics solutions to the Navy and Joint Force, generating effects across the spectrum of military operations in strategic competition, crisis, and conflict.

MSC crews, trains, equips, and operates more than 140 government and commercially-owned and chartered vessels to directly support Navy Fleet Commanders. MSC, as Naval Sealift Transportation Command (NAVTRANS), also serves as the Naval Component of U.S. Transportation Command (USTRANSCOM).

The MSC Fleet includes cargo vessels, tankers, naval auxiliaries, and a variety of special mission ships. MSC ships are underway around the world to serve joint warfighters and call on ports in every continent, including Antarctica.

MSC Area Commands provide expertise and operational perspective to Navy Fleet Commanders worldwide. The Area Commands are operationally focused and aligned with the Numbered Fleet logistics staffs in their respective theaters: MSC Atlantic in Norfolk, Virginia; MSC Pacific in San Diego; MSC Europe and Africa in Naples, Italy; MSC Central in Manama, Bahrain; and MSC Far East in Singapore. The MSC Area Commands also directly command and control vessels assigned USTRANSCOM missions as part of the NAVTRANS mission.

Ship maintenance and support functions are integrated into six maintenance hubs under the Area Commands in the following locations: Naples, Italy; Manama, Bahrain; Singapore; Yokohama, Japan; San Diego and Guam.

MSC is a \$5 billion per year organization which provides services to the Navy, Army, Air Force, Marine Corps, Coast Guard, Space Force, U.S. Transportation Command, Missile Defense Agency, and other U.S. government agencies.

Worldwide operations are funded through two working capital funds, complemented by Navy's Operations and Maintenance funding to support Maintenance and Repair. The Navy Working Capital Fund is used to support Navy Fleet Commanders and other Department of War entities. The Transportation Working Capital Fund is used to support sealift services.

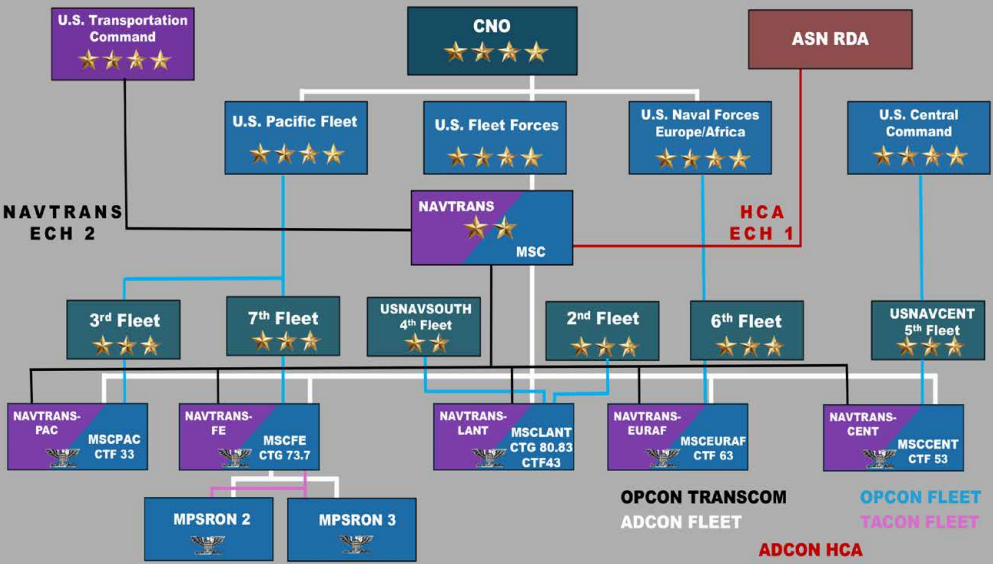
MSC receives direct funding appropriations from the Navy for Maintenance and Repair. MSC customers transfer funding for their requirements to MSC into the appropriate working capital fund and MSC draws from the fund to pay for command operations. Essentially, MSC is primarily funded by purchases from its customers.

Unlike private industry, that budgets to make a profit, the goal of the Working Capital Fund is to break even, i.e., charges levied on customers equal MSC's expenses and no more.

Created in 1949, MSC, then called Military Sea Transportation Service, became the single managing agency for the Department of War's ocean transportation needs. MSC has been present during every major conflict since World War II, providing vital logistics and operational support to the U.S. Navy and Joint Force around the globe.

MSC is focused on continuing to achieve maritime success in a contested logistics environment by developing new technologies and strategies. The next decade will see the delivery of new ships with modernized systems, and emerging capabilities such as new ship to shore connectors, unmanned resupply, and expeditionary munitions reload to better support distributed maritime logistics and no-fail mission sustainment.





## CHAIN OF COMMAND

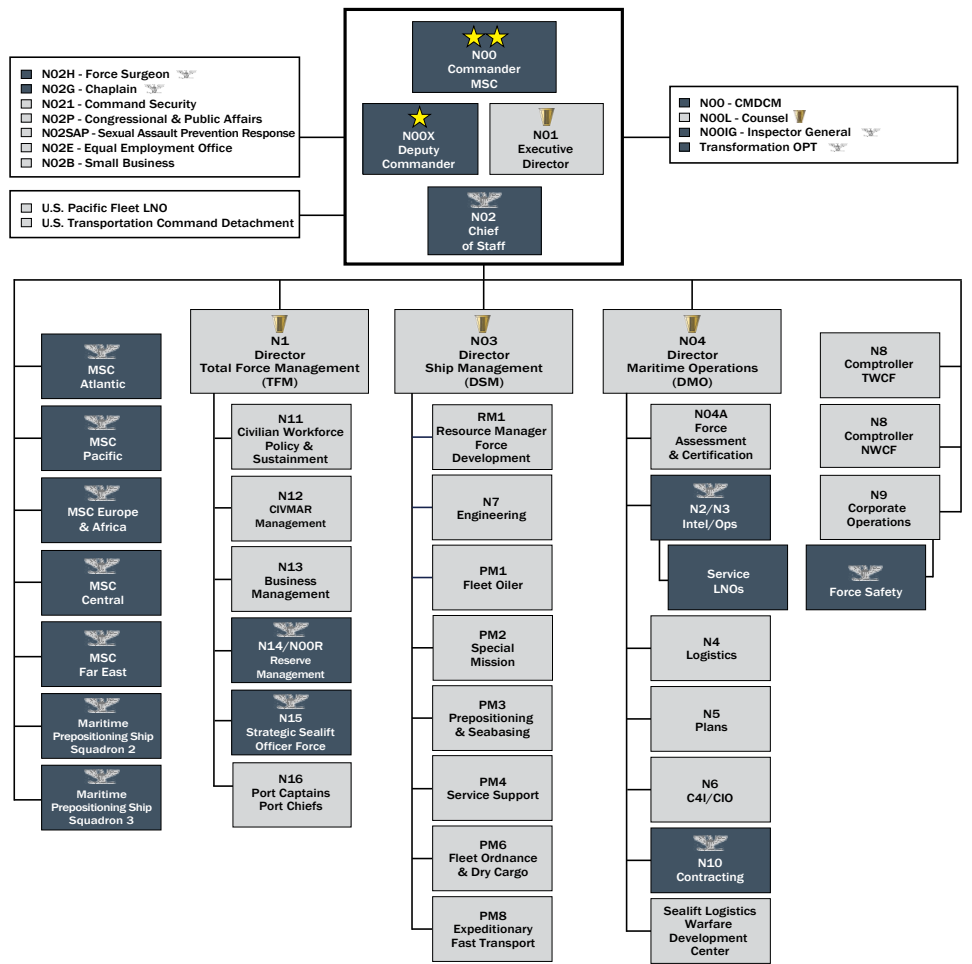
**U.S. TRANSPORTATION COMMAND**  
 5 stars  
 MSC reports to U.S. Transportation Command for defense transportation matters as the Naval Component.  
 USTRANSCOM provides coordination of air, land, and sea transportation for the Department of War.

**U.S. FLEET FORCES COMMAND**  
 5 stars  
 MSC reports to U.S. Fleet Forces Command for Navy-unique matters.  
 USFF provides combat-ready forces forward to Numbered Fleets and Combatant Commanders around the globe in support of United States national interests.

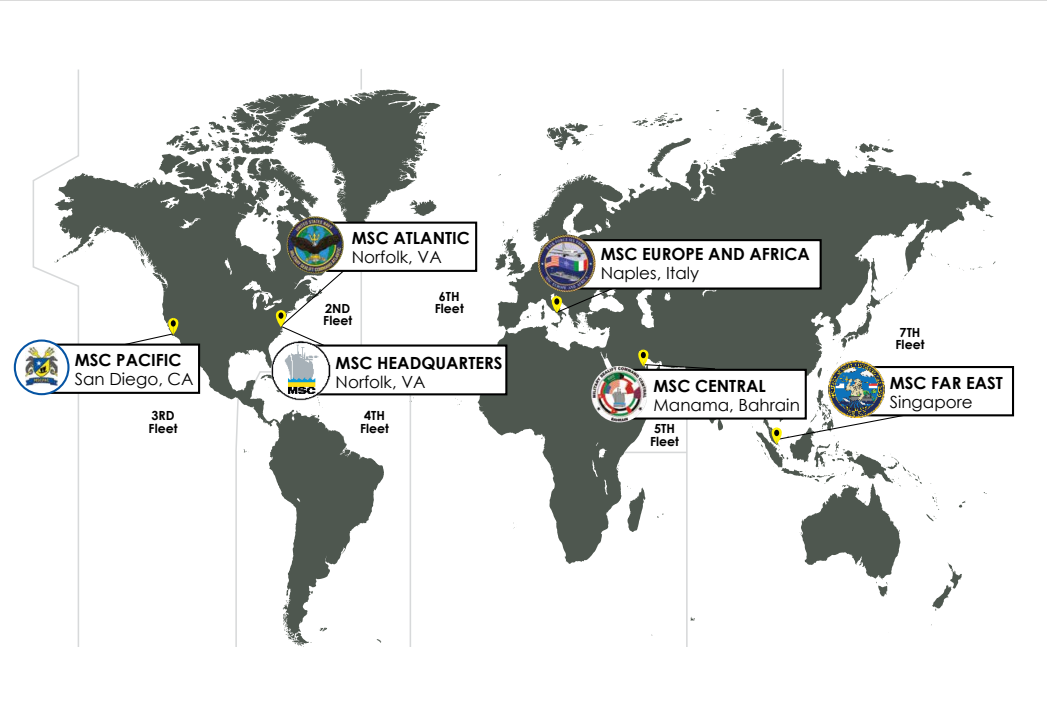
**ASSISTANT SECRETARY OF THE NAVY FOR RESEARCH, DEVELOPMENT AND ACQUISITION**  
 MSC reports to the Assistant Secretary of the Navy (Research, Development and Acquisition) for procurement policy and oversight matters.  
 ASN (RDA) provides weapons systems and platforms for the Navy and Marine Corps.



2 stars  
**MILITARY SEALIFT COMMAND**



■ Military  
 ■ Civilian



MSC’s area commands provide expertise and operational perspective to Navy Fleet commanders worldwide. The area commands are operationally focused, and are aligned with the Numbered Fleet logistics staffs in their respective theaters: **Atlantic** in Norfolk, Virginia; **Pacific** in San Diego; **Europe and Africa** in Naples, Italy; **Central** in Manama, Bahrain, and **Far East** in Singapore. The area commands also act as the Naval Sealift Transportation Command (NAVTRANS) task force reporting to U.S. Transportation Command for defense transportation matters.

Area commands also have offices and representatives in Diego Garcia; Okinawa, Japan; Republic of Korea; Spain; Greece (Crete); the United Arab Emirates; Djibouti; Pearl Harbor, Hawaii; Seattle, Earle, New Jersey; Sunny Point, North Carolina; Charleston, South Carolina; Beaumont, Texas; Port Canaveral, Florida, and Jacksonville, Florida. Ship maintenance and support functions are integrated into six maintenance hubs that operate under the MSC area commands in the following locations: Naples, Italy; Manama, Bahrain; Singapore; Yokohama, Japan; San Diego and Guam.


### EMPOWER GLOBAL WARFIGHTING EFFECTIVENESS

Military Sealift Command exists to support the joint warfighter across the full spectrum of military operations. MSC delivers agile logistics, strategic sealift, as well as specialized missions anywhere in the world, under any conditions, 24/7, 365 days a year.

### WE DELIVER

MSC executes no-fail sustainment and service support missions for warfighters across the globe. Our ships are ready and crews trained to fully integrate with Fleet and Joint Forces in contested environments.

1. Dynamic, prioritized, and scalable enterprise force development and force generation model that supports **planned and emergent requirements in peacetime and in potential conflicts.**
2. **Appropriate authorities** to (re)assign, (re)allocate, (re)prioritize, and employ capabilities **to meet global support requirements**, to include influence over a resource-formed vice platform-based concept of support that maximizes employment of high-demand, low-density logistics assets.
3. **Effective manning model** that enables delivery of skilled, trained personnel at capacity required to execute the breadth of MSC missions while also sustaining quality of service for our military and civil service workforce, at sea and ashore.
4. Robust, agile, and integrated network (information, systems, & analytic decision support) architecture that enables responsive operational and administrative C2 to **maneuver and sustain forces in a Denied, Disrupted, Intermittent, Limited (DDIL) environment.**
5. Financial management construct that **timely aligns resources** to execute missions in accordance with planned and emergent operational requirements of supported commanders.

  
**DESIRED  
END STATE:**  
 To be prepared  
for and  
successfully  
execute  
assigned  
missions in  
a contested  
environment  
at the time,  
scale, and pace  
required by the  
Navy and Joint  
Force in a  
high-end  
conflict

**2026 MSC Command Priorities**

**MISSION ASSURANCE**

**Man, train, and equip** the MSC Fleet to enable mission execution from competition through escalation to armed conflict.

Advocate for and **deliver personnel and platform readiness and sustainment** at sufficient breadth and depth required of near-term force generation and employment, longer-term force development.

**WORKFORCE RESILIENCY  
AND SAFETY**

Sustain the **highest standards of professionalism and safety** while promoting a talented workforce.

Develop, implement and sustain robust readiness and training process that enable a resilient workforce, **prepared for combat operations**, afloat and ashore.

**Strengthen enduring relationships** with maritime industry partners to promote the skills and capacity required of the U.S. Maritime Workforce to execute MSC missions.

**WARFIGHTING EFFECTIVENESS**

**Develop, resource, and integrate workforce, capabilities and force structure** to execute mission at scale and pace required in combat.

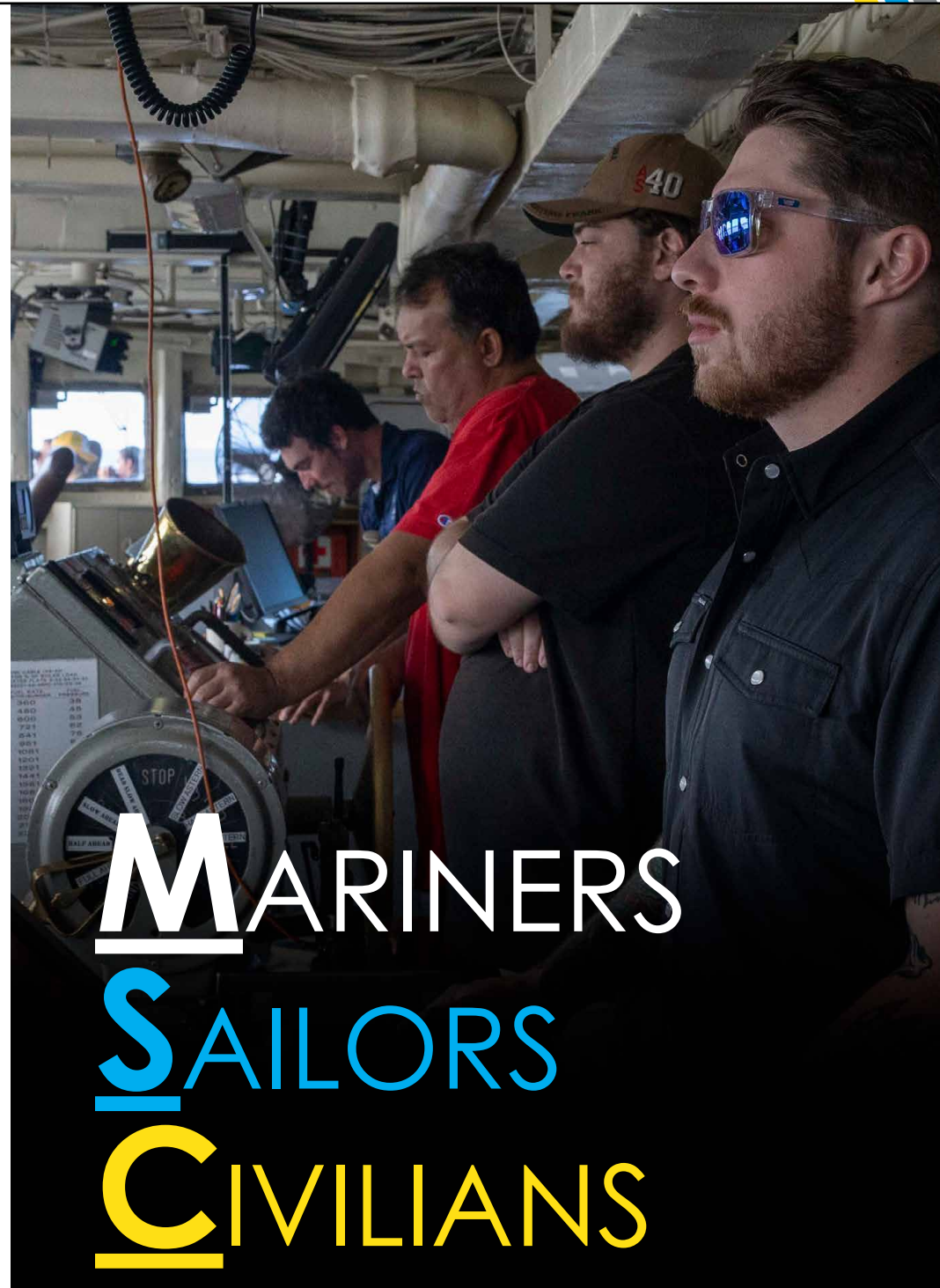
Implement enhanced tactics, techniques, procedures and **leverage partnerships and technologies** integral to MSC contributions to Navy, Joint, and Allied logistics in contested operations.

**Execute effective planning, employment, and C2** of forces assigned as Navy Component to USMC.

**DRIVE DECISION ADVANTAGE**

Develop and sustain data analytics and information sharing that enables enterprise-wide collaboration and **agile decision making.**

Utilize decision, action, and **assessment methodologies** that achieve timely and effective force development, force generation, and force employment, aligned to Fleet and Combatant Commander priorities.



**MARINERS  
SAILORS  
CIVILIANS**

**MILITARY SEALIFT COMMAND EMPLOYMENT**

**U.S. GOVERNMENT WORKFORCE**

Civil Service Mariners	5,943
Military - Active Component	382
Military - Reserve Component	825
Military - Strategic Sealift Officers	2,381
Civilians	1,443

**COMMERCIAL MARINERS 1,500**

**TOTAL PERSONNEL 12,474**

\*As of Oct 2025

MSC has a total workforce of more than 12,000 people worldwide, most of whom serve at sea. More than half of MSC’s workforce is made up of Civil Service Mariners (CIVMARs) who are federal employees. The remainder includes contract commercial mariners, Civil Service personnel ashore and Active duty and Reserve military members.

There are two labor models for crewing aboard MSC ships. On government-operated vessels, the crew consists of CIVMARs employed directly by MSC who are issued Department of War identification cards and receive federal benefits. Crews on contractor-operated vessels are referred to as Contract Mariners (CONMARs). These personnel are employed directly by the ship’s operating company which is under contract to MSC and, like CIVMARs, are usually represented by one of the maritime labor unions.

Some government-owned and operated-ships also have military detachments assigned to carry out communication and supply functions, as well as special mission functions appropriate for military personnel. Some ships carry temporary military detachments for force protection. Additionally, the amphibious command ship, submarine tenders and expeditionary sea base ships and some Expeditionary Fast Transport ships have hybrid crews that combine uniformed Navy personnel with CIVMARs under the leadership of a U.S. Navy Captain.

MSC vessel crew members are divided between licensed and unlicensed personnel. Licensed personnel (such as the Ship’s Master and Chief Engineer) hold a current U.S. Coast Guard-issued license, which is obtained through a combination of sea time and successful completion of a licensing exam. Although the division between licensed and unlicensed personnel aboard MSC may be compared to the officer/enlisted relationship aboard U.S. Navy ships, a more appropriate analogy is the management/labor relationship in the civilian industry.

CIVMARs are recruited from transitioning military, merchant marines, maritime academy graduates, and skilled entry-level candidates to fill maritime job opportunities. CIVMARs serve in a variety of externally hired positions in the Deck, Engine, Communications, Supply and Medical departments. The Supply department incorporates both the Culinary and Logistics department positions.

**Deck**

Members of the Deck department are responsible for the safe navigation of the ship, underway replenishment rigs, dry/liquid cargo handling, forklift operations, and helicopter flight deck operations. They also stand watch while in port or at sea, and perform routine deck maintenance such as cleaning, painting, and preserving the ship.

**Engine**

Members of the Engine department are responsible for the maintenance and repair of the ship’s machinery, including material handling equipment, elevators, and winches. They also fabricate replacement parts utilizing various types of machinery, and stand watch in the engine room.

**Communications**

Members of the Communications department are responsible for the operation and maintenance of the ship’s military communication suites and for communications planning, administration and watch.

**Culinary**

MSC’s Culinary department is part of the larger Supply department. Members of the Culinary department are responsible for the daily provisions of food and supplies, for cooking, baking, and food preparation. Duties and responsibilities may include progressive cooking techniques, menu development, healthy recipe development/preparation, preparing entrees utilizing the Armed Forces Recipe Service and local recipes and instructions.

**Logistics**

Military Sealift Command’s Logistics department is also part of the larger Supply department. Members of the Logistics department are responsible for performing inventory, and for storekeeping duties such as cargo handling, record keeping, receipt and stowage and issuance of all stores. This department also cleans and maintains the staterooms and passageways, and is responsible for the ship’s laundry.

**Medical**

Members of the Medical department provide services to maintain and sustain a healthy workforce to include providing inoculations, first aid treatments and sanitation inspections. This position is designated by the U.S. Coast Guard as a staff officer.



The Navy Reserve (NR) mission for MSC is to provide Cargo Afloat Rig Teams (CART), expeditionary port units, headquarters support units, and Tactical Advisors (TACADs) for operations which require additional manpower not normally required during sustained peacetime operations.

As the Navy Component to U.S. Transportation Command (USTRANSCOM), MSC serves as the Sealift Operational Commander and the Strategic Sealift Officer Force (SSOF) Flag Sponsor, responsible for training and warfighting readiness of SSOF.

**HQ Support Units** The eight MSC HQ Units provide trained staff support personnel to augment MSC HQ, USTRANSCOM, and Area Command staffs directly supporting port operations, global watch floors, Fleet and Combatant Commanders as liaison officers, MSC Offices, country team engagements and operational logistics/fleet sustainment.

**Cargo Afloat Rig Teams (CART)** Underway replenishment rig teams augment U.S. government civil service crews on Combat Logistics Force (CLF) platforms. MSC has five CART units providing 12 rig teams supporting underway replenishment, ammunition offload/onload evolutions, and exercise support.

**Expeditionary Port Units (EPU)** MSC's 10 Expeditionary Port Units provide Maritime Transportation Specialist subject matter expertise, liaison and ship husbandry support for Continental United States and forward-deployed port operations.

**Tactical Advisors (TACADs)** TACADs serve on ships in support of Naval Transportation missions. TACADs advise vessel Ship Masters on potential threats and mitigation recommendations as well as train the crews to increase survivability.

**Strategic Sealift Officer Force (SSOF)** The SSOF is comprised of approximately 2,300 Navy Reserve Officers with U.S. Coast Guard Merchant Mariner credentials and military training to support the activation, operation, and sustainment of the Maritime Administration Ready Reserve Fleet, maritime domain operations, and the maritime industrial base throughout the continuum of conflict.

It is critical to the national interest that sealift assets are available to transport cargo during time of war or national crises. As such, capacity has been established to ensure sealift resources are available for all contingencies. The layers of capacity (in order of activation) are:

1. Maritime Administration vessels in the Ready Reserve Force.
2. Commercial ships enrolled in the Voluntary Intermodal Sealift Agreement (VISA), which includes all ships in the Maritime Security Program (MSP). MSC may also charter ships as needed.

### The U.S. Maritime Administration (MARAD)

The U.S. Maritime Administration is an agency within the U.S. Department of Transportation. Its programs promote the viability of the U.S. Merchant Marine and the seamless integration of waterborne transportation with other segments of the transportation system. MARAD's programs involve ships and shipping, shipbuilding, port operations, vessel operations, national security, environment and safety. MARAD also maintains the Ready Reserve Force, a fleet of cargo ships in reserve to provide surge sealift during war and national emergencies, and is responsible for disposing of obsolete ships in that fleet and other non-combatant government ships.

### The Ready Reserve Force (RRF)

The Ready Reserve Force (RRF) is a subset of vessels within MARAD's National Defense Reserve Fleet (NDRF) ready to support the rapid worldwide deployment of U.S. military forces. As a key element of Department of War (DOW) strategic sealift, the RRF primarily supports transport of Army and Marine Corps unit equipment, combat support equipment, and initial resupply during critical surge periods -- the period of time before commercial ships can be secured for similar support. The RRF ships are recognizable by their red, white, and blue stack colors.

**Strategically Positioned.** Some RRF ships are anchored with the NDRF homeport in Beaumont, Texas, but most are anchored at various U.S. "outports" around the country, a combination of government and commercial facilities selected by military planners to minimize sailing time to strategic locations. Outported RRF ships are also used by the Army and Navy for cargo-handling exercises, and by various law enforcement agencies for homeland security training.

**At-the-Ready.** RRF ships are expected to be fully operational within their assigned 5 and 10-day readiness status and then sail to designated loading berths. Prior to being activated, commercial U.S. ship managers provide systems maintenance, equipment repairs, logistics support, activation, manning, and operations management by contract. The RRF is periodically tested by DOW-driven activations of ships for military cargo operations and exercises.

**Crewed by Mariners.** Ships in priority readiness have Reduced Operating Status (ROS) maintenance crews of about 10 commercial Merchant Mariners that are then supplemented by additional mariners on a situational basis once activated.

Our American maritime ecosystem relies upon a healthy and robust U.S. Merchant Marine, including the institutions that produce them. Key elements include the Voluntary Intermodal Sealift Agreement (VISA), Maritime Security Program (MSP), and Tanker Security Program (TSP); all designed to maintain and expand a U.S. flagged fleet and attract the talent needed to build, operate and maintain American ships.

## Voluntary Intermodal Sealift Agreement (VISA)

VISA provides the Department of War with assured access to U.S.-flagged commercial ships, crews, related equipment and intermodal systems to meet Department of War contingency requirements. This concept is modeled after the Department of War's civil reserve air fleet program. Carriers commit all or specified portions of their fleet to meet time-phased Department of War contingency requirements in exchange for a preference to receive Department of War contracts for ocean transportation. MARAD is the executive agent for the VISA program. A high percentage of the military vessels in the U.S.-flagged fleet are committed to the VISA program.

## Maritime Security Program (MSP)

Established by the Maritime Security Act of 1996, MSP maintains a fleet of commercially viable, militarily useful ships, active in international trade, yet available on call to meet Department of War contingency requirements. In return for a single, annual per-ship retainer payment, the program also provides Department of War access to the multibillion-dollar global intermodal networks and transport links maintained by participating carriers. All MSP ships enroll in either the VISA program for dry cargo ships or the Voluntary Tanker Agreement (VTA) program for tankers. MARAD administers the MSP program in close partnership with the U.S. Transportation Command.

Congress dictates the number of MSP Operating Agreements available to MARAD. Each agreement allows one U.S.-flagged vessel to work under the program. Carriers in the MSP rely on three things to be able to participate in the program and operate under the U.S. registry. These are an annual stipend from the U.S. Government to offset costs of operating under the U.S. flag, access to U.S. Government cargo defined by the Cargo Preference Laws, and commercial competition.

Ocean carriers entering ships into the MSP fleet benefit from an expedited reflag process created to reduce the time and cost of reflagging vessels from foreign flag to U.S. registry.

## Tanker Security Program (TSP)

TSP ensures that a core fleet of U.S.-based product tankers can operate competitively in international trade and enhance U.S. supply chain resiliency for liquid fuel products. The TSP will provide the Department of War with assured access to 10 U.S.-registered product tank vessels that may be used to supply the armed forces with fuel during times of armed conflict or national emergency.

## Combat Logistics Force

Sustain our Navy at and from the sea

## Special Mission

Support oceanography, underwater surveillance, missile tracking, submarine, and special warfare

## Prepositioning and Seabasing

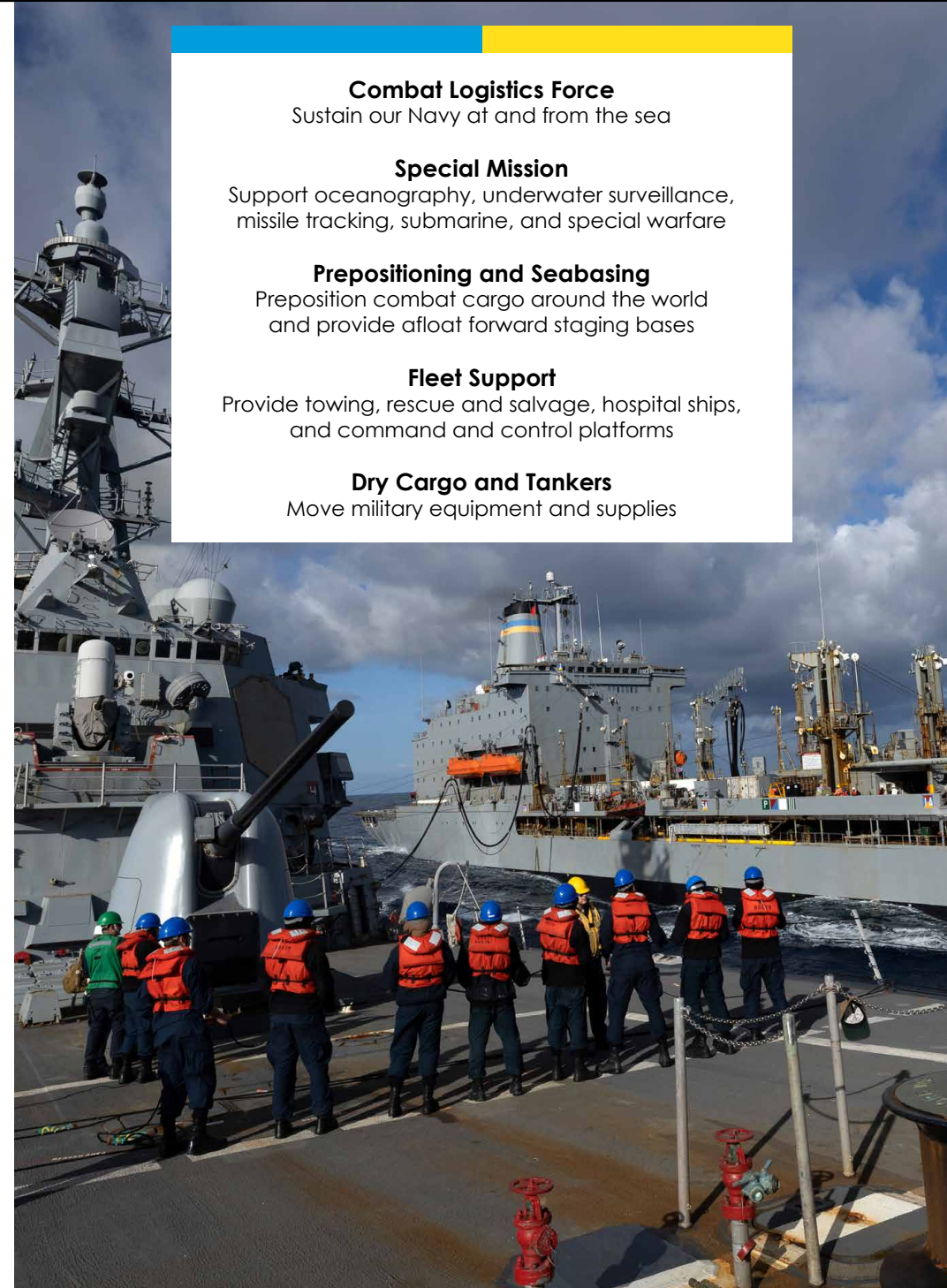
Preposition combat cargo around the world and provide afloat forward staging bases

## Fleet Support

Provide towing, rescue and salvage, hospital ships, and command and control platforms

## Dry Cargo and Tankers

Move military equipment and supplies



**COMBAT LOGISTICS FORCE**

32

- 16 Fleet Replenishment Oiler
- 14 Dry Cargo/Ammunition Ships
- 2 Fast Combat Support Ships

**SPECIAL MISSION**

23

- 1 Missile Range Instrumentation Ship
- 7 Ocean Surveillance Ships
- 6 Oceanographic Survey Ships
- 1 Sea-based X-band Radar Ship
- 1 Sea-based X-band Radar Support Ship
- 1 Navigation Test Support Ship
- 2 Cable Laying/Repair Ships
- 4 Submarine Support Ships

**PREPOSITIONING AND SEABASING**

21

- 9 Maritime Prepositioning Force LMSR, RO/RO, Expeditionary Transfer Dock Ships
- 1 Offshore Petroleum Distribution Ship
- 1 Offshore Petroleum Distribution Support Ship
- 3 Army Prepositioning Stocks, LMSR and Container Ships
- 2 Air Force Prepositioning Container Ships
- 5 Expeditionary Sea Base Ships

**FLEET SUPPORT**

27

- 2 Hospital Ships
- 2 Rescue and Salvage Ships
- 2 Submarine Tenders
- 2 Fleet Ocean Tugs
- 1 Command Ship
- 1 Fleet Experimentation Ship
- 4 Submarine and Special Warfare Support Ships
- 11 Expeditionary Fast Transport Ships
- 2 High-Speed Transport Ships

**DRY CARGO AND TANKERS**

14

- 2 Dry Cargo
- 12 Tankers

**U.S. MARITIME ADMINISTRATION READY RESERVE FORCE**

48

- 42 Roll-on/Roll-off Ships
- 4 Auxiliary Crane Ships
- 2 Aviation Maintenance Ships



**COMBAT LOGISTICS FORCE**

**Combat Logistics Force (CLF)** ships provide logistics support such as fuel, ordnance, food, repair and spare parts, and other stores to deployed U.S. Navy and partner-nation ships. These ships enable combatants to remain on station and continue their primary mission without having to return to port for resupply. They are essential when combatants cannot receive supplies from local ports in theater due to force protection measures. All three types of CLF ships are U.S. government-owned, crewed by Civil Service Mariners, and capable of integrating rotary wing aircraft operations.



**FLEET REPLENISHMENT OILER**

Provides underway replenishment of fuel, fleet cargo and stores to ships at sea.

- T-AO 187 **USNS Henry J. Kaiser**
- T-AO 188 **USNS Joshua Humphreys**
- T-AO 189 **USNS John Lenthall**
- T-AO 195 **USNS Leroy Grumman**
- T-AO 196 **USNS Kanawha**
- T-AO 199 **USNS Tippecanoe**
- T-AO 200 **USNS Guadalupe**
- T-AO 201 **USNS Patuxent**
- T-AO 202 **USNS Yukon**
- T-AO 203 **USNS Laramie**
- T-AO 204 **USNS Rappahannock**

**TECHNICAL CHARACTERISTICS**

**GOVERNMENT-OWNED**

**Length** 677.5 ft, **Beam** 97.5 ft, **Draft** 35.8 ft  
**Displacement** 40,900-41,225 tons, **Speed** 20 kts

**Crew:** Civil Service Mariners

**Capacities:**

180,000 barrels of fuel (DFM and JP-5 jet fuel) **T-AO 187-200, 202**  
 159,000 -159,500 barrels of fuel (DFM and JP-5 jet fuel) **T-AO 201, 203-204**  
 7,400 sq ft Dry Cargo and 128 pallets of Refrigerated goods.



**FLEET REPLENISHMENT OILER**

Provides underway replenishment of fuel, fleet cargo and stores to customer ships at sea.

- T-AO 205 **USNS John Lewis**
- T-AO 206 **USNS Oscar V. Peterson**
- T-AO 207 **USNS Earl Warren**
- T-AO 208 **USNS Robert F. Kennedy**
- T-AO 209 **USNS Lucy Stone**

**TECHNICAL CHARACTERISTICS**

**GOVERNMENT-OWNED**

**Length** 746 ft, **Beam** 106 ft, **Draft** 34 ft  
**Displacement** 49,850 tons, **Speed** 20 kts

**Crew:** Civil Service Mariners

**Capacities:**

162,000 barrels of fuel (DFM and JP-5 jet fuel)  
 55,662 cu ft Dry Cargo and 40,099 cu ft Refrigerated goods



**DRY CARGO / AMMUNITION SHIP**

Delivers ammunition, food, repair parts, stores and small quantities of fuel to customer ships at sea.

- T-AKE 1 USNS Lewis and Clark (Prepositioning)
- T-AKE 2 USNS Sacagawea (Prepositioning)
- T-AKE 3 USNS Alan Shepard
- T-AKE 4 USNS Richard E. Byrd
- T-AKE 5 USNS Robert E. Peary
- T-AKE 6 USNS Amelia Earhart
- T-AKE 7 USNS Carl Brashear
- T-AKE 8 USNS Wally Schirra
- T-AKE 9 USNS Matthew Perry
- T-AKE 10 USNS Charles Drew
- T-AKE 11 USNS Washington Chambers
- T-AKE 12 USNS William McLean
- T-AKE 13 USNS Medgar Evers
- T-AKE 14 USNS Cesar Chavez

**TECHNICAL CHARACTERISTICS**

**GOVERNMENT-OWNED**

**Length** 689 ft, **Beam** 106 ft, **Draft** 30 ft  
 Displacement 41,000 tons, **Speed** 20 kts

**Crew:** Civil Service Mariners

**Capacities:**  
 7,700 tons dry cargo  
 1,200 tons refrigerated stores  
 25,000 bbls cargo fuel



**FAST COMBAT SUPPORT SHIP**

Delivers petroleum products, ammunition, food and other cargo to customer ships at sea.

- T-AOE 6 USNS Supply
- T-AOE 8 USNS Arctic

**TECHNICAL CHARACTERISTICS**

**GOVERNMENT-OWNED**

**Length** 754 ft, **Beam** 107 ft, **Draft** 38 ft  
**Displacement** 48,500 tons, **Speed** 25+ kts

**Crew:** Civil Service Mariners

**Capacities:**  
 156,000 bbls cargo fuel  
 1,800 tons ammunition  
 250 tons dry cargo  
 400 tons refrigerated store



**MISSILE RANGE INSTRUMENTATION SHIP**

Monitors missile launches and collects data.

T-AGM 25 USNS Howard O. Lorenzen

**SPECIAL  
MISSION**

The **Special Mission Program** provides operating platforms and services for a wide variety of U.S. military and other U.S. government missions.

Most special mission ships are government-owned and operated by U.S. contract mariners working for companies under contract to MSC. Other ships are contracted to MSC and are crewed by U.S. contract mariners.

**TECHNICAL CHARACTERISTICS**

**GOVERNMENT-OWNED**

**Length** 534 ft, **Beam** 89 ft, **Draft** 21.4 ft  
**Displacement** 12,642 tons, **Speed** 20 kts

**Crew:** Contract Mariners, Military



**OCEAN SURVEILLANCE SHIP**

**OCEAN SURVEILLANCE SHIP**

Conducts Surveillance Towed Array Sensor System operations.

Conducts Surveillance Towed Array Sensor System operations.

- T-AGOS 19    **USNS Victorious**
- T-AGOS 20    **USNS Able**
- T-AGOS 21    **USNS Effective**
- T-AGOS 22    **USNS Loyal**

- T-AGOS 23    **USNS Impeccable**

**TECHNICAL CHARACTERISTICS**

**TECHNICAL CHARACTERISTICS**

**GOVERNMENT-OWNED**

**GOVERNMENT-OWNED**

**Length** 234.5 ft, **Beam** 93.5 ft, **Draft** 24.9 ft  
**Displacement** 3,384 tons, **Speed** 10 kts

**Crew:** Contract Mariners, Military

**Length** 281.6 ft, **Beam** 95.8 ft, **Draft** 25.9 ft  
**Displacement** 5,370 tons, **Speed** 12 kts

**Crew:** Contract Mariners, Military



**OCEAN SURVEILLANCE SHIP**

Conducts Surveillance Towed Array Sensory System (SURTASS) operations. The vessel will tow a passive acoustic monitoring system.

- HOS Red Rock (SURTASS-E)
- HOS Red Dawn (SURTASS-E)

**TECHNICAL CHARACTERISTICS**

**CONTRACTOR-OWNED**

**Length** 292 ft, **Beam** 64 ft, **Draft** 19.9 ft  
**Displacement** 3,911 tons, **Speed** 12 kts

**Crew:** Contract Mariners, Military



**OCEANOGRAPHIC SURVEY SHIP**

Supports worldwide oceanography programs, which includes performing acoustical, biological, physical and geophysical surveys.

- |          |                             |
|----------|-----------------------------|
| T-AGS 60 | <b>USNS Pathfinder</b>      |
| T-AGS 62 | <b>USNS Bowditch</b>        |
| T-AGS 63 | <b>USNS Henson</b>          |
| T-AGS 64 | <b>USNS Bruce C. Heezen</b> |
| T-AGS 65 | <b>USNS Mary Sears</b>      |
| T-AGS 66 | <b>USNS Marie Tharp</b>     |
| T-AGS 67 | <b>USNS Robert Ballard</b>  |

**TECHNICAL CHARACTERISTICS**

**GOVERNMENT-OWNED**

**Length** 328.5-353 ft, **Beam** 58 ft, **Draft** 19 ft  
**Displacement** 5,000 tons, **Speed** 16 kts

**Crew:** Contract Mariners, Military



**SEA-BASED X-BAND RADAR**

Semi-submersible, self-propelled platform that provides ballistic missile-tracking information for the Missile Defense Agency.

SBX-1 **Sea-based X-band Radar**  
 HOS **Black Watch** (SBX-1 Support Ship)

**TECHNICAL CHARACTERISTICS**

GOVERNMENT-OWNED

**Length** 389 ft, **Beam** 238 ft, **Draft** 12.4 ft  
**Displacement** 32,690 tons, **Speed** 8 kts

**Crew:** Contract Mariners, Military

**HOS Black Watch:** Length 302 ft, Beam 64 ft, Draft 21 ft, Speed 12 kts



**NAVIGATION TEST SUPPORT SHIP**

Assists with weapons and navigation systems testing.

T-AGS 45 **USNS Waters**

**TECHNICAL CHARACTERISTICS**

GOVERNMENT-OWNED

**Length** 442 ft, **Beam** 69 ft, **Draft** 15 ft  
**Displacement** 12,208 tons, **Speed** 13.2 kts

**Crew:** Contract Mariners, Military



**CABLE LAYING / REPAIR SHIP**

Transports, deploys, retrieves and repairs undersea cables.

CS Global Sentinel  
CS Decisive

**TECHNICAL CHARACTERISTICS**

**CONTRACTOR-OWNED**

**Length** 478 ft, **Beam** 71 ft, **Draft** 15 ft  
**Displacement** 16,118 tons, **Speed** 14 kts

**Crew:** Contract Mariners



**SUBMARINE SUPPORT**

Supports the Navy's submarine and special warfare requirements.

T-AGSE 1	USNS Black Powder
T-AGSE 2	USNS Westwind
T-AGSE 3	USNS Eagleview
T-AGSE 4	USNS Arrowhead

**TECHNICAL CHARACTERISTICS**

**GOVERNMENT-OWNED**

**Length** 250 ft, **Beam** 54 ft, **Displacement** 2,850 tons

**Crew:** Contract Mariners



PREPOSITIONING AND SEABASING

**Prepositioning and Seabasing** are essential elements in the U.S. military’s readiness strategy. The program places military equipment and supplies onboard ships located in key ocean areas to ensure rapid availability during a major theater war, humanitarian operation or other contingency.

MSC’s Prepositioning ships are able to discharge cargo pierside or while anchored offshore by using shallow-draft barges, called lighterage, that are carried aboard. This allows cargo to be ferried to shore in areas where ports are non-existent or in poor condition and gives military forces the ability to operate in both developed and under-developed areas of the world.

Prepositioning ships include Maritime Prepositioning Force (MPF) ships supporting the U.S. Navy and Marine Corps that are strategically located in two geographic areas and assigned to one of two Maritime Prepositioning Ship (MPS) squadrons: MPS Squadron Two in Diego Garcia in the Indian Ocean, and MPS Squadron Three in western Pacific Ocean. These ships are crewed by mariners who work for ship operating companies under contract to MSC.

MSC also operates Large, Medium-Speed Roll-on/Roll-off (LMSR) and container ships to support the Army’s prepositioned stocks program and ships to support Air Force prepositioning requirements in the western Pacific.

The expeditionary sea base provides an afloat forward staging base that can execute missions to support Aviation Mine Countermeasure and Special Forces. The platform also provides enhanced command and control, communications, computers, and intelligence capabilities to support embarked force mission planning and execution.

**MARITIME PREPOSITIONING FORCE  
ROLL-ON / ROLL-OFF CONTAINER**

Provides equipment to sustain a Marine Corps Air Ground Task Force and discharges cargo in port or at sea using the Improved Navy lighterage system.

- T-AK 3009      **USNS PFC Dewayne T. Williams**
- T-AK 3011      **USNS 1ST LT Jack Lummus**
- T-AK 3012      **USNS SGT William R. Button**

**TECHNICAL CHARACTERISTICS**

**GOVERNMENT-OWNED**

**Length** 673.2 ft, **Beam** 105.5 ft, **Draft** 33 ft  
**Displacement** 46,111 tons, **Speed** 17.7 kts

**Crew:** Contract Mariners

**Capacities:** 162,500 square feet vehicle, 1.6M gallons petroleum, 81,700 gallons water, 522 Containers (TEU - Twenty Foot Equivalent Unit), Lighterage - 2, Landing Craft Mechanized (LCM); Helicopter platform supports CH-53 up to E-model.



**MARITIME PREPOSITIONING FORCE  
LMSR ROLL-ON / ROLL-OFF**

Prepositions containerized and palletized cargo as well as rolling stock.

- T-AKR 302 **USNS Seay**
- T-AKR 304 **USNS Pillilauu**
- T-AKR 311 **USNS Sisler**
- T-AKR 312 **USNS Dahl**

**TECHNICAL CHARACTERISTICS**

**GOVERNMENT-OWNED**

**Length** 950 ft, **Beam** 105.8 ft, **Draft** 36 ft  
**Displacement** 62,644 tons, **Speed** 24 kts

**Crew:** Contract Mariners

**Capacity:** 394,673 sq ft



**MARITIME PREPOSITIONING FORCE  
EXPEDITIONARY TRANSFER DOCK**

Serves as a transfer station to facilitate delivery of equipment cargo to areas with limited or unavailable port access.

- T-ESD 1 **USNS Montford Point**
- T-ESD 2 **USNS John Glenn**

**TECHNICAL CHARACTERISTICS**

**GOVERNMENT-OWNED**

**Length** 784 ft, **Beam** 164 ft, **Draft** 39.3 ft  
**Displacement** 77,388 tons, **Speed** 17.7 kts

**Crew:** Contract Mariners

**Capacities:** 25,000 square feet vehicle staging area, 380,000 gallons of cargo fuel, 100,000 potable water storage, 25,000 gallon potable water generation per day, 20 containers (TEU - Twenty Foot Equivalent Unit), 3 Landing Craft Air Cushion lanes, and a helicopter platform for medical evacuation operations.



**OFFSHORE PETROLEUM DISTRIBUTION SYSTEM**

The Offshore Petroleum Distribution System transfers fuel from tankers to depots ashore from up to eight miles off the coast.

- T-AG 5001
- T-AG 4907
- USNS VADM K.R. Wheeler**
- USNS Fast Tempo**



**ARMY PREPOSITIONED STOCKS LMSR AND CONTAINER**

Prepositions U.S. Army stocks and are available to move common user cargo.

- T-AKR 313
- T-AKR 315
- T-AKR 316
- USNS Red Cloud**
- USNS Watkins**
- USNS Pomeroy**

**TECHNICAL CHARACTERISTICS**

**GOVERNMENT-OWNED**

**Length** 349 ft, **Beam** 70 ft, **Draft** 26 ft  
**Speed** 15 kts, **Displacement** 6,491.5 tons

**Crew:** Contract Mariners

**USNS Fast Tempo:** Length 160 ft, Beam 30 ft, Displacement 610.6

**TECHNICAL CHARACTERISTICS**

**GOVERNMENT-OWNED**

**Length** 950 ft, **Beam** 105.8 ft, **Draft** 36.1 ft  
**Displacement** 62,644 tons, **Speed** 24 kts

**Crew:** Contract Mariners

**Capacity:** 392,627 sq ft



**AIR FORCE  
PREPOSITIONING CONTAINER**

Provides U.S. Air Force with  
prepositioned ammunition stocks.

- T-AK 4396      **MV MAJ Bernard F. Fisher**
- T-AK 5362      **MV CAPT David I. Lyon**

**TECHNICAL CHARACTERISTICS**

**CONTRACTOR-OWNED**

**Length** 652 / 604 ft, **Beam** 106 / 83 ft, **Draft** 35 ft  
**Displacement** 48,305 / 30,835 tons, **Speed** 16 kts

**Crew:** Contract Mariners

**Capacity:** 1,936 / 1,730 Containers (TEU - Twenty Foot Equivalent Unit)



**EXPEDITIONARY SEA BASE**

Provides dedicated support for airborne mine  
countermeasures, expeditionary missions, counter-piracy,  
maritime security, humanitarian assistance and disaster relief.  
Supports rotary wing aircraft, including MV-22 Osprey.

- ESB 3      **USS Lewis B. Puller**
- ESB 4      **USS Hershel "Woody" Williams**
- ESB 5      **USS Miguel Keith**
- ESB 6      **USS John L. Canley**
- ESB 7      **USNS Robert E. Simanek**

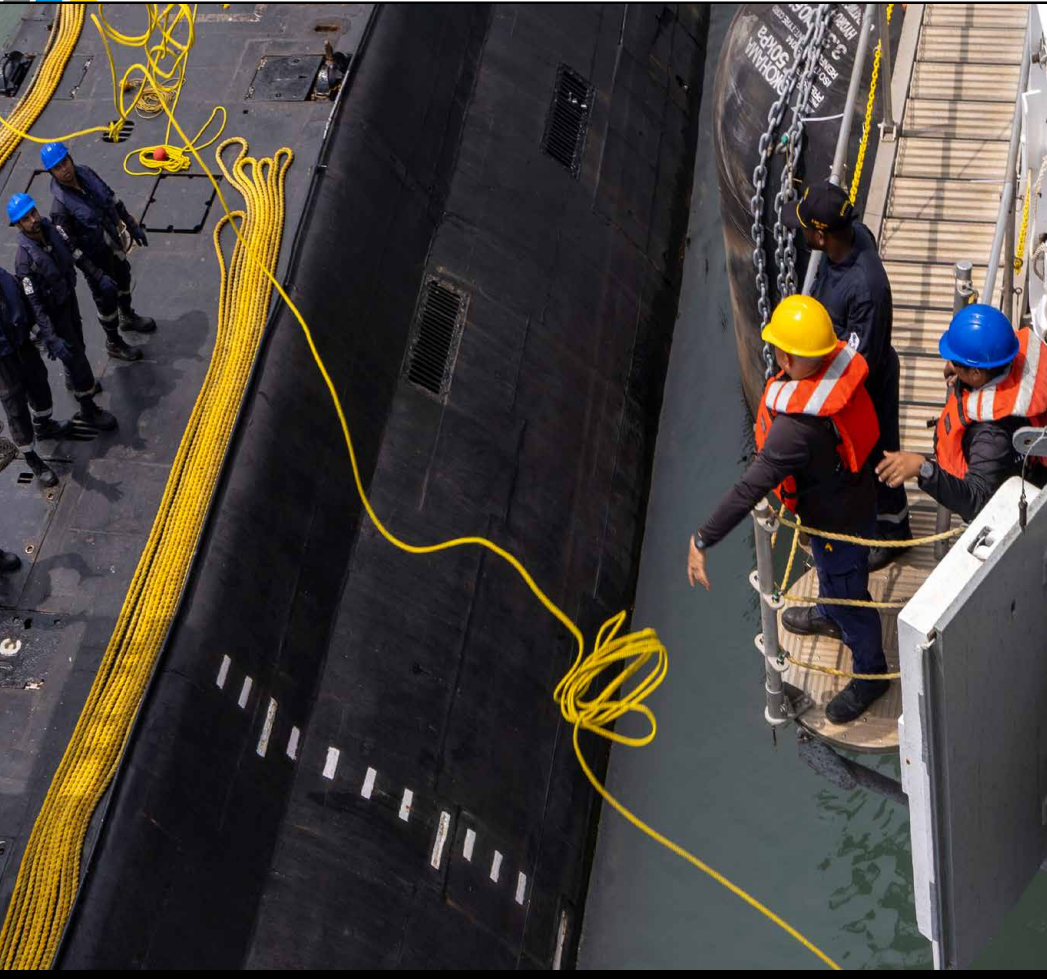
**TECHNICAL CHARACTERISTICS**

**GOVERNMENT-OWNED**

**Length** 784 ft, **Beam** 164 ft, **Draft** 31 ft  
**Displacement** 106,664 tons, **Speed** 15 kts

**Crew:** Civil Service Mariners, Military

The ESB is crewed by a hybrid team of civil service mariners and military crew members and members who operate and maintain the flight deck, berthing and messing accommodations and command and control to support embarked mission forces.



**HOSPITAL SHIP**

Hospital ships provide emergency on-site care for U.S. combatant forces deployed in war or other operations.

T-AH 19  
T-AH 20

USNS Mercy  
USNS Comfort

**FLEET  
SUPPORT**

Fleet Support ships provide towing, rescue and salvage, submarine support, command and control, and afloat medical facilities. Support ships include fleet ocean tugs, rescue and salvage ships, hospital ships, submarine tenders, and a command ship.

Fleet Support manages government-owned, government-operated ships and commercial-owned, commercial-operated ships.

**TECHNICAL CHARACTERISTICS**

**GOVERNMENT-OWNED**

**Length** 894 ft, **Beam** 106 ft, **Draft** 32 ft  
**Displacement** 69,552 tons, **Speed** 17 kts

**Crew:** Civil Service Mariners, Military

T-AH ships are outfitted with 12 fully equipped operating rooms, 1,000-bed hospital facility, digital radiological services, medical laboratory, pharmacy, optometry and lens laboratory, CT scanner and two oxygen-producing plants.



**RESCUE AND SALVAGE SHIP**

Conducts salvage, diving, towing, off-shore firefighting, heavy lift operations and theater security cooperation missions.

T-ARS 51 **USNS Grasp**  
 T-ARS 52 **USNS Salvor**



**SUBMARINE TENDER**

Provides repair services to submarines. Commanded by a Navy Captain with combined Civil Service Mariner and military crew.

AS 39 **USS Emory S. Land**  
 AS 40 **USS Frank Cable**

**TECHNICAL CHARACTERISTICS**

**GOVERNMENT-OWNED**

**Length** 255 ft, **Beam** 51 ft, **Draft** 17 ft  
**Displacement** 3,336 tons, **Speed** 14 kts

**Crew:** Civil Service Mariners, Military

Utilizes a 7.5-ton boom forward and a 40-ton boom aft for salvage operations; tethered diving to 190 ft or 300 ft with fly-away mixed gas system; bollard pull of 120,000 lbs with 3,000 foot drum for towing; bow and stern rollers for heavy lifts up to 300 tons; monitors with 1,000 gallons/minute seawater or Aqueous Film-Forming Foam for firefighting.

**TECHNICAL CHARACTERISTICS**

**GOVERNMENT-OWNED**

**Length** 644 ft, **Beam** 85 ft, **Draft** 26 ft  
**Displacement** 23,000 tons, **Speed** 20 kts

**Crew:** Civil Service Mariners, Military

Navigation, deck, engineering, laundry and galley services provided by Civil Service Mariners.



FLEET OCEAN TUG

Provides towing, diving and standby submarine rescue services to the Navy's numbered fleet commanders.

T-ATF 168 USNS Catawba



FLEET OCEAN TUG

Provides towing, diving and submarine rescue, and salvage operations to the Navy's numbered fleet commanders.

MV Gary Chouest

TECHNICAL CHARACTERISTICS

GOVERNMENT-OWNED

**Length** 226 ft, **Beam** 42 ft, **Draft** 15.1 ft  
**Displacement** 2,296 tons, **Speed** 14.5 kts

**Crew:** Civil Service Mariners, Military

Ten-ton crane and a 54-ton bollard; deck grid for bolting down portable equipment during towing operations; three fire monitors supply up to 2,200 gallons of foam per minute during firefighting; deep submergence module can be embarked to support Naval salvage teams for dive operations.

TECHNICAL CHARACTERISTICS

CONTRACTOR-OWNED

**Length** 275 ft, **Beam** 62 ft, **Draft** 19 ft  
**Displacement** 4,065 tons, **Speed** 16 kts

**Crew:** Contract Mariners



**COMMAND SHIP**

U.S. 6th Fleet flagship with advanced C4I suites. Commanded by a Navy Captain with a combined Civil Service Mariner/military crew.

LCC 20 **USS Mount Whitney**



**FLEET EXPERIMENTATION**

Performs exercise support, fleet experiments and other missions.

OSV **Ocean Valor**

**TECHNICAL CHARACTERISTICS**

**GOVERNMENT-OWNED**

**Length** 636 ft, **Beam** 108 ft, **Draft** 24 ft  
**Displacement** 15,000 tons, **Speed** 23 kts

**Crew:** Civil Service Mariners, Military

Navigation, deck, engineering, laundry and galley services provided by MSC civil service mariners.

**TECHNICAL CHARACTERISTICS**

**CONTRACTOR-OWNED**

**Length** 261 ft, **Beam** 60 ft  
**Displacement** 3,183 LT, **Speed** 14 kts

**Crew:** Contract Mariners, Military



**SUBMARINE AND SPECIAL WARFARE SUPPORT**

Supports the Navy's submarine and special warfare requirements.

OSV HOS **Rosebud**  
 MV **Kellie Chouest**  
 MV **Alyssa Chouest**

**SUBMARINE AND SPECIAL WARFARE SUPPORT**

Supports the Navy's submarines and special warfare requirements.

PTV **Malama**

**TECHNICAL CHARACTERISTICS**

**CONTRACTOR-OWNED**

**Length** 285 / 310 / 311 ft, **Beam** 60 / 52 / 60 ft  
**Displacement** 3,446 / 1,657/2,165 tons

**Crew:** Contract Mariners

**TECHNICAL CHARACTERISTICS**

**CONTRACTOR-OWNED**

**Length** 110 ft, **Beam** 22 ft  
**Displacement** 600 tons

**Crew:** Contract Mariners



**EXPEDITIONARY FAST TRANSPORT**

**HIGH SPEED TRANSPORT**

Aluminum catamarans designed to be fast, flexible and maneuverable making the vessel ideal for transporting troops and equipment quickly.

Aluminum catamarans designed to be fast, flexible and maneuverable making the vessel ideal for transporting troops and equipment quickly.

- T-EPF 5 **USNS Trenton**
- T-EPF 6 **USNS Brunswick**
- T-EPF 7 **USNS Carson City**
- T-EPF 8 **USNS Yuma**
- T-EPF 9 **USNS City of Bismarck**
- T-EPF 10 **USNS Burlington**
- T-EPF 11 **USNS Puerto Rico**
- T-EPF 12 **USNS Newport**
- T-EPF 13 **USNS Apalachicola**
- T-EPF 14 **USNS Cody**
- T-EPF 15 **USNS Point Loma**

- HST 1 **USNS Guam**
- HST 2 **Formerly MV Alakai**

**TECHNICAL CHARACTERISTICS**

**TECHNICAL CHARACTERISTICS**

**Length** 337.9 ft, **Beam** 93.5 ft, **Draft** 12.57 ft  
**Displacement** 2,460 tons, **Speed** 35 kts

**Crew:** Civil Service Mariners

**Capacity:** Up to 312 passengers and 600 tons with 20,000 square feet cargo storage. Can be reconfigured to quickly adapt to whatever mission the ship is tasked with to include carrying containerized portable hospitals to support disaster relief or transporting tanks and troops.

USNS Cody and USNS Point Loma are Flight II medical variants.

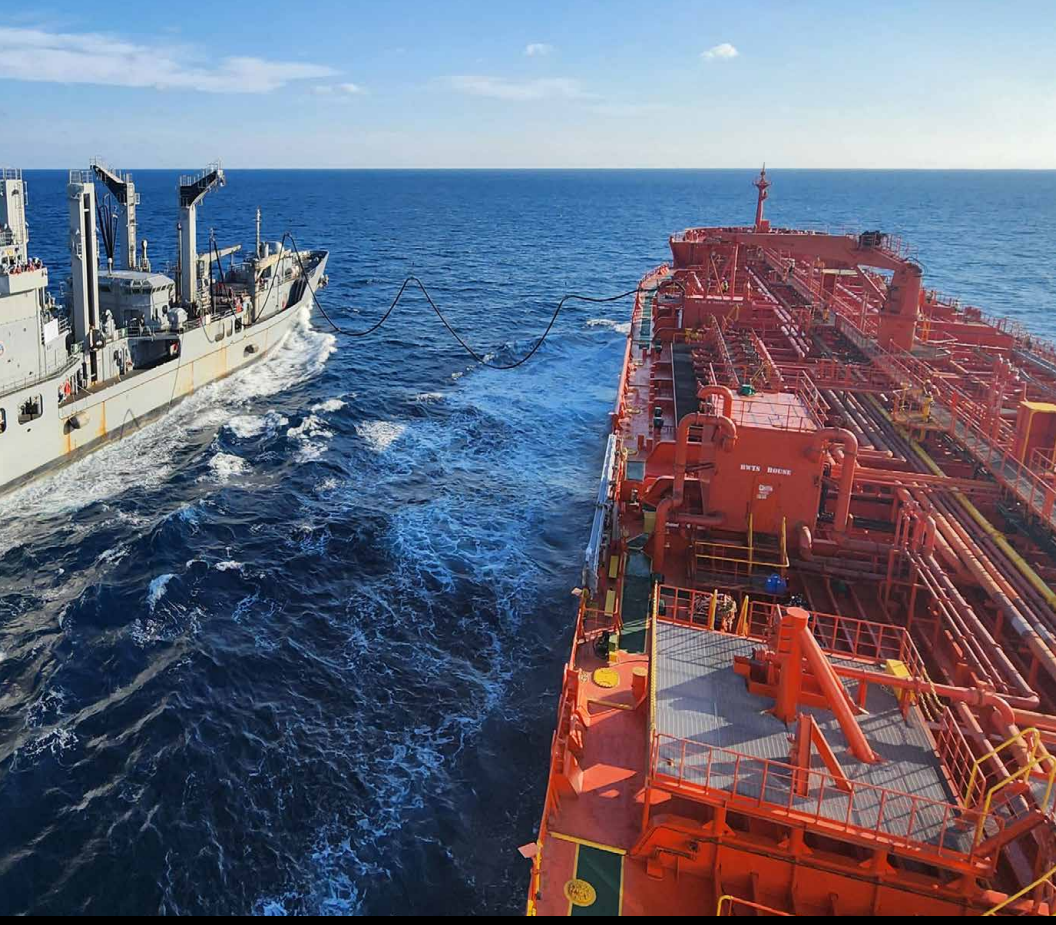
**GOVERNMENT-OWNED**

**GOVERNMENT-OWNED**

**Length** 373 / 379 ft, **Beam** 78 ft  
**Displacement** 1,646 tons, **Speed** 33 kts

**Crew:** Contract Mariners

**Capacity:** 24,500 sq ft



**DRY CARGO**

Delivers Dry Cargo and Bulk products to DOW storage and distribution facilities worldwide.

T-AK 5603      SLNC Star

**DRY CARGO  
AND TANKERS**

MSC has 12 long-term chartered commercial **tankers**, and various short-term time chartered commercial tankers. These ships transport refined petroleum products between commercial refineries and DOW storage and distribution facilities worldwide for Defense Logistics Agency-Energy, which procures and manages fuel for all of DOW. These ships are crewed by commercial mariners working for companies under contract to MSC.

The **Dry Cargo** vessel SLNC Star makes regular resupply runs from Singapore to Diego Garcia. Self-tending allows cargo operations without assistance. Tug Rikki conducts routine resupply of the Atlantic Undersea Test and Evaluation Center (AUTEC), located on Andros Island in the Bahamas.

**TECHNICAL CHARACTERISTICS**

**CONTRACTOR-OWNED**

**Length** 443 ft, **Beam** 59 ft  
**Displacement** 9,295 tons

**Crew:** Contract Mariners



**DRY CARGO**

**TANKER**

Delivers Dry Cargo and Bulk products to DOW storage and distribution facilities worldwide.

Delivers petroleum products to DOW storage and distribution facilities worldwide.

T/B **Rikki S/MB Thunder Road**

- T-AOT 5193
  - T-AOT 5205
  - T-AOT 5419
  - T-AOT 5439
  - T-AOT 5581
  - T-AOT 5582
  - T-AOT 5646
- MT Empire State**
  - MT Evergreen State**
  - MT SLNC Goodwill**
  - MT Overseas Mykonos**
  - MT Allied Pacific**
  - MT Badlands Trader**
  - MT Everglades Trader**

**TECHNICAL CHARACTERISTICS**

**TECHNICAL CHARACTERISTICS**

CONTRACTOR-OWNED

CONTRACTOR-OWNED

Length 85 ft, Beam 26 ft

Crew: Contract Mariners

Length 590-601 ft, Beam 106 ft  
Displacement 55,000-62,174 tons

Crew: Contract Mariners



**TANKER**

Delivers petroleum products to DOW storage and distribution facilities worldwide.

- T-AOT 5356     **MT SLNC Pax**
- T-AOT 5562     **MT Haina Patriot**
- T-AOT 5560     **MT Pohang Pioneer**
- T-AOT 5630     **MT Redwood Trader**



**TANKER**

Delivers petroleum products to DOW storage and distribution facilities worldwide.

- T-AOT 5563     **MT Stena Polariss**

**TECHNICAL CHARACTERISTICS**

**CONTRACTOR-OWNED**

**Length** 333-357 ft, **Beam** 52-64 ft  
**Displacement** 9,160-9,989 tons  
**Crew:** Contract Mariners

**TECHNICAL CHARACTERISTICS**

**CONTRACTOR-OWNED**

**Length** 600 ft, **Beam** 131 ft  
**Displacement** 65,200 tons  
**Crew:** Contract Mariners

	OFFICE	DSN
<b>Commander, MSC HQ:</b>		
Commander	757-443-2706	646-2706
Deputy Commander	757-443-2706	646-2706
Executive Director	757-443-2339	646-2339
Chief of Staff	757-443-5911	646-5911
Command Master Chief	757-341-3429	646-3429
Global Command Information Center	757-443-5845	646-5845
Inspector General	757-443-2340	646-2340
Director, Congressional and Public Affairs	757-443-2839	646-2839
Director, Force Safety	757-341-5662	646-5662
Director, Total Force Management	757-443-2865	646-2865
Legal Counsel	757-443-5287	646-5287
Equal Employment Opportunity	757-341-3310	646-3310
Director, Ship Management	757-443-5672	646-5672
Deputy Director, Ship Management	757-443-2776	646-2776
Program Manager, Fleet Oiler	757-443-2883	646-2883
Program Manager, Special Mission	757-443-5957	646-5957
Program Manager, Prepositioning & Seabasing	757-443-0870	646-0870
Program Manager, Service Support	757-443-2780	646-2780
Program Manager, Fleet Ordnance and Dry Cargo	757-443-5041	646-5041
Program Manager, Expeditionary Fast Transport	757-443-2437	646-2437
Director, Maritime Operations	757-443-2700	646-2700
Deputy Director, Maritime Operations	757-443-2776	646-2776
Director, Operations/Plans	757-443-0952	646-0952
Director, Logistics	757-443-2817	646-2817
Director, Command, Control, Communications and Computer Systems	757-443-2893	646-2893
Director, Engineering	757-341-5519	646-5519
Comptroller	757-443-3905	646-3905
Director, Corporate Operations	757-341-3430	646-3430
Director, Contracts and Business Management	757-341-2308	646-2308
Medical Readiness	757-443-5771	646-5771
Marine Placement	757-443-5922	646-5922
Force Safety	757-341-5662	646-5662
Sexual Assault Prevention and Response	757-803-4530	646-4530
Chaplain	757-443-3973	646-3973
Navy Civilian Employee Assistance	844-366-2327	646-2327
National Suicide Prevention Lifeline	800-273-8255	646-8255
<b>CIVMAR Support Center</b>	<b>877-CIVMAR-1</b>	<b>757-276-9519</b>

	OFFICE	DSN
<b>MSC Atlantic (Norfolk):</b>		
Commodore	757-443-5601	646-5601
Deputy	757-443-5602	646-5602
Staff Duty Officer	757-443-5758	646-5758
<b>MSC Pacific (San Diego):</b>		
Commodore	619-524-9600	524-9600
Deputy	619-524-9600	524-9600
Staff Duty Officer	619-572-2969	
<b>MSC Europe and Africa (Italy):</b>		
Commodore	39-081-568-4097	314-626-4097
Chief Staff Officer	39-081-568-4637	314-626-4637
Staff Duty Officer	39-081-568-2028	314-626-2028
<b>MSC Far East (Singapore):</b>		
Commodore	65-6750-2750	315-421-2750
Chief Staff Officer	65-6750-2730	315-421-2730
Staff Duty Officer	65-6750-2594	315-421-2594
Ship Support Singapore	65-6750-2580	315-421-2580
Ship Support Yokohama (Japan)	81-45-872-6318	315-269-6318
Ship Support Guam	671-339-5161	315-339-5161
<b>MSC Central (Bahrain):</b>		
Commodore	973-1785-3770	318-439-3770
Deputy	973-1785-4181	318-439-4181
Watch Station	973-1785-9479	318-439-9479
Ship Support Bahrain	973-1785-4953	318-439-4953
<b>Other Offices and Representatives:</b>		
Beaumont, TX	409-617-0380	
Charleston, SC	843-743-0569	
Sunny Point, NC	910-457-8210	
Port Canaveral, FL	321-853-7818	
Jacksonville, FL	904-696-5198	
Earle, NJ	732-866-7224	
Pearl Harbor, HI	808-471-2113	
Seattle, WA	425-304-4851	
Diego Garcia	246-370-4778	
Rota, Spain	34-95-682-5754	
Souda Bay, Crete	30-282-102-1820	
Korea	82-51-801-3119	
Okinawa, Japan	81-909-789-9683	
Kuwait	619-533-7202	
<b>MSC Detachment USTRANSCOM, Scott AFB, IL</b>	618-220-4773	770-4773
<b>MSC LNO, Pearl Harbor, HI</b>	808-471-8597	315-472-8597





